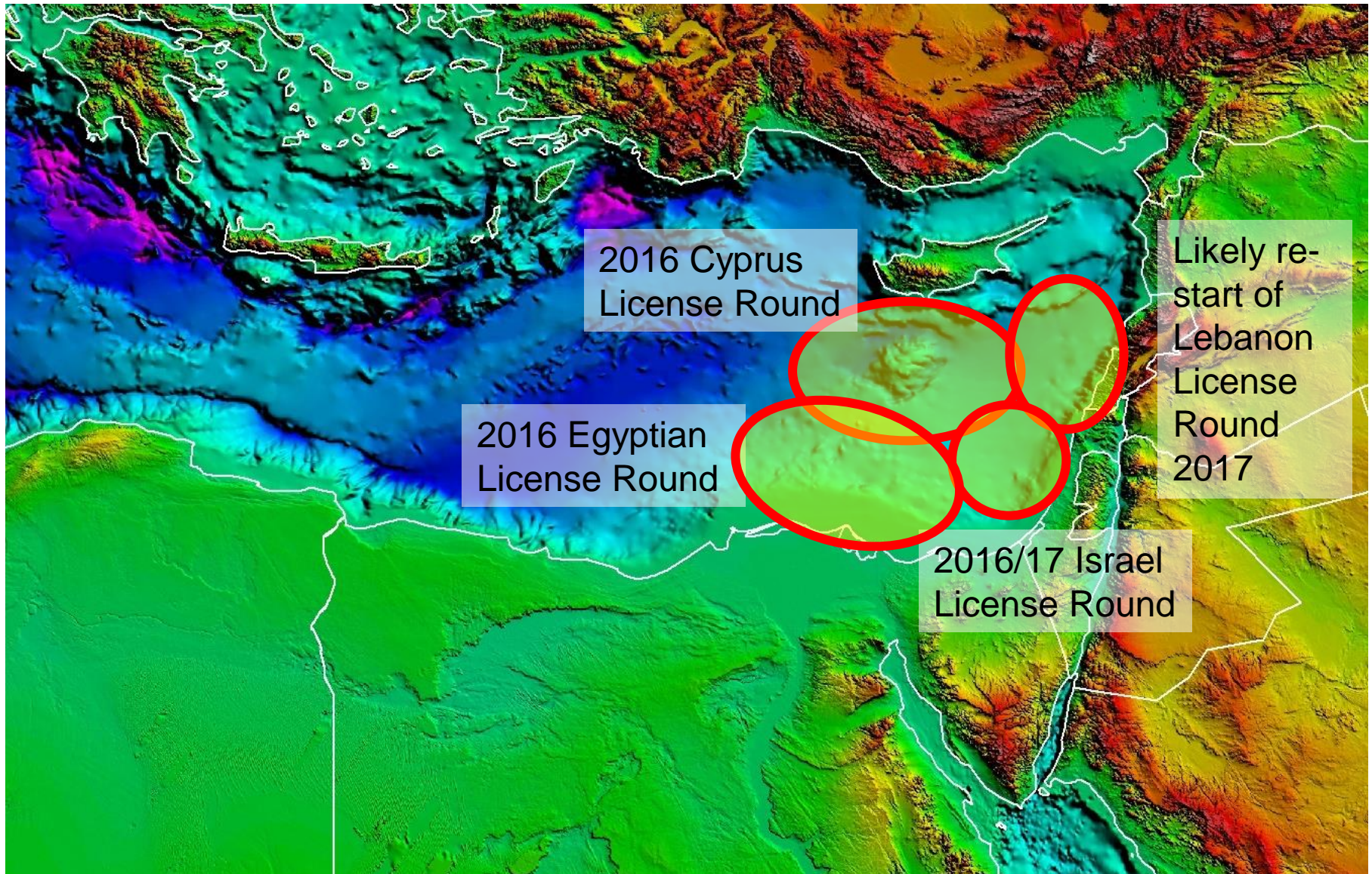


“A Sight for Zohr Eyes” The Search for the Next North African Super-giant



Neil Hodgson and Jevon Hilder
Spectrum

Eastern Mediterranean: A new eruption of activity



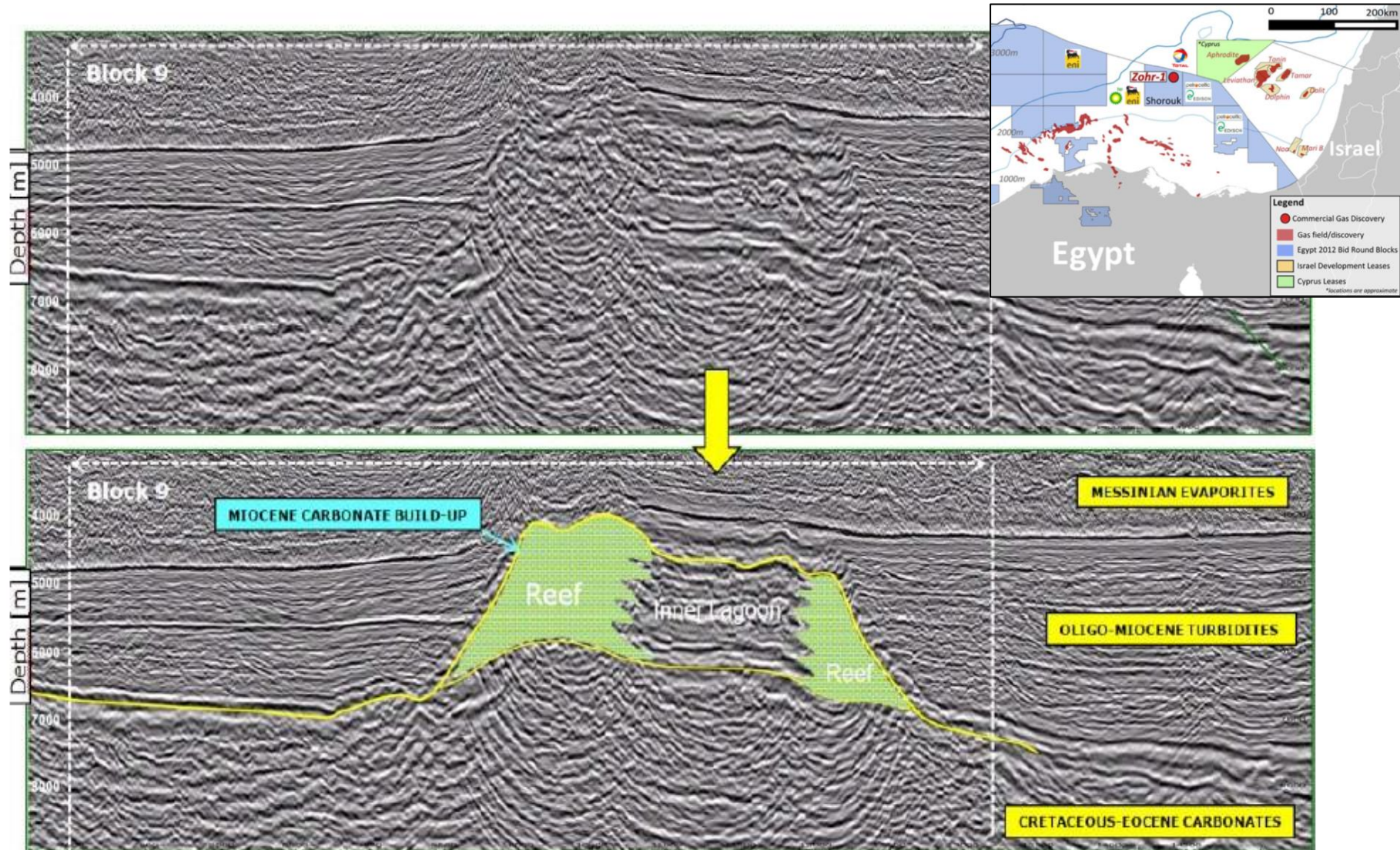
2016 Cyprus
License Round

2016 Egyptian
License Round

2016/17 Israel
License Round

Likely re-
start of
Lebanon
License
Round
2017

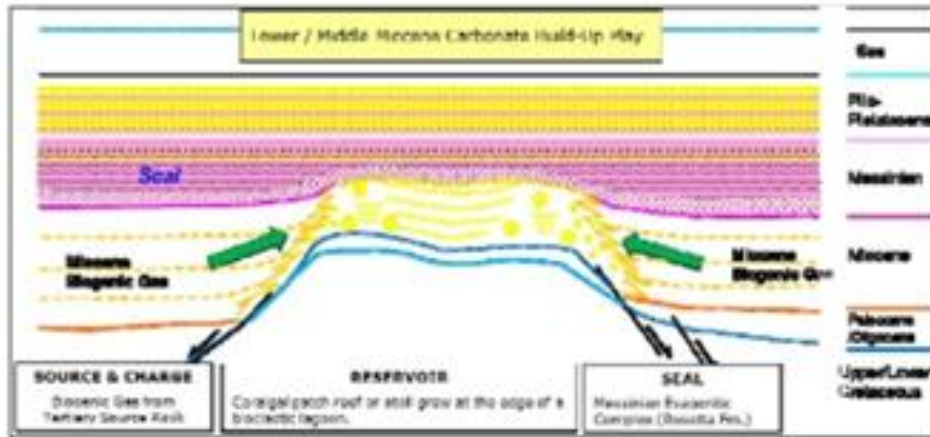
So what caused all this fuss?



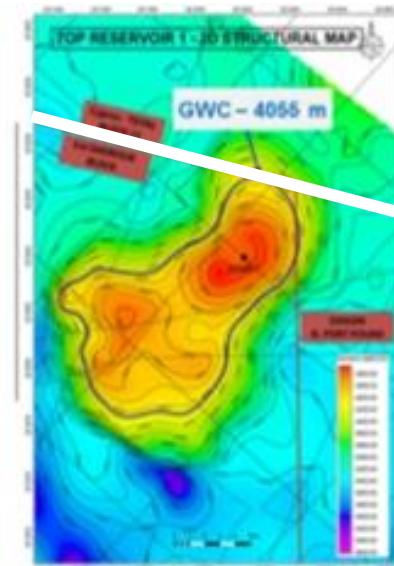
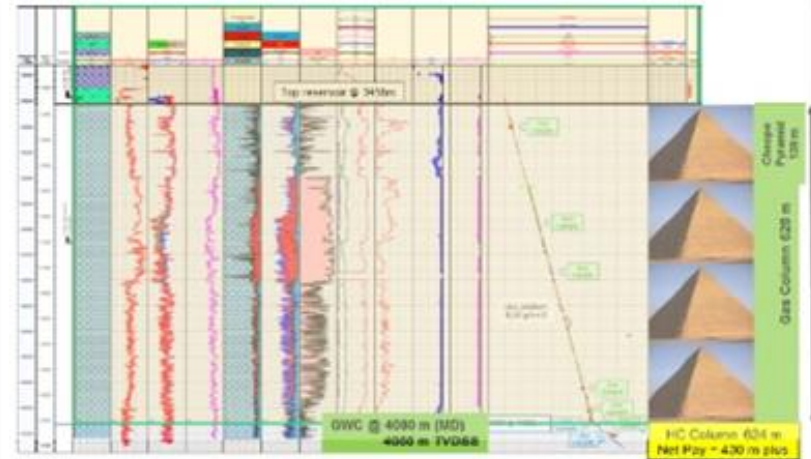
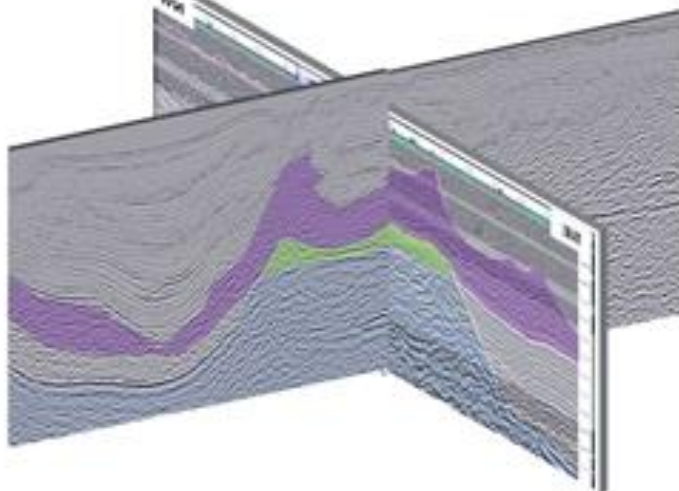
Zohr – ENI Published PLAY ELEMENTS



Zohr Geological Model



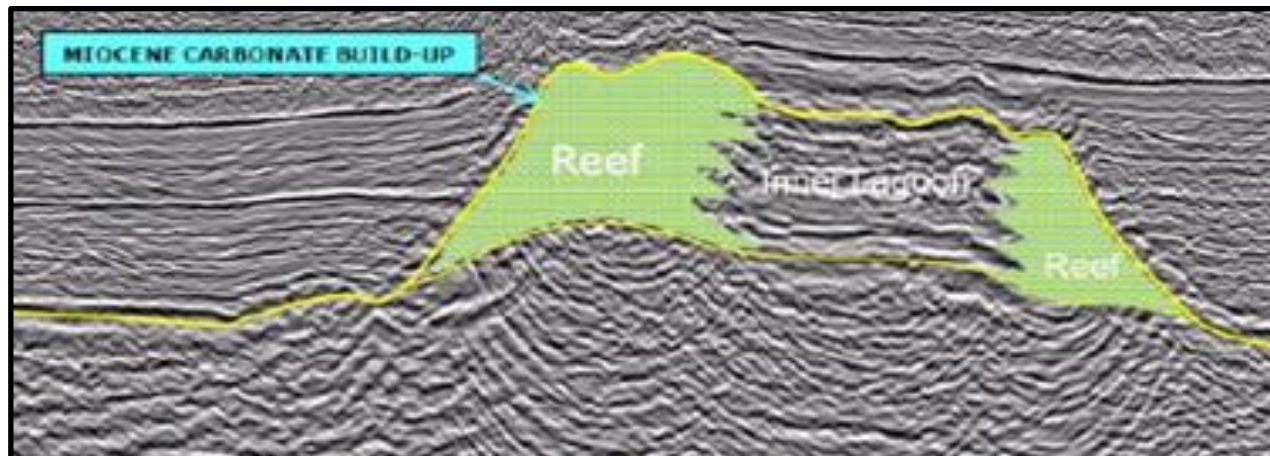
Reef atoll at edge of bioclastic lagoon



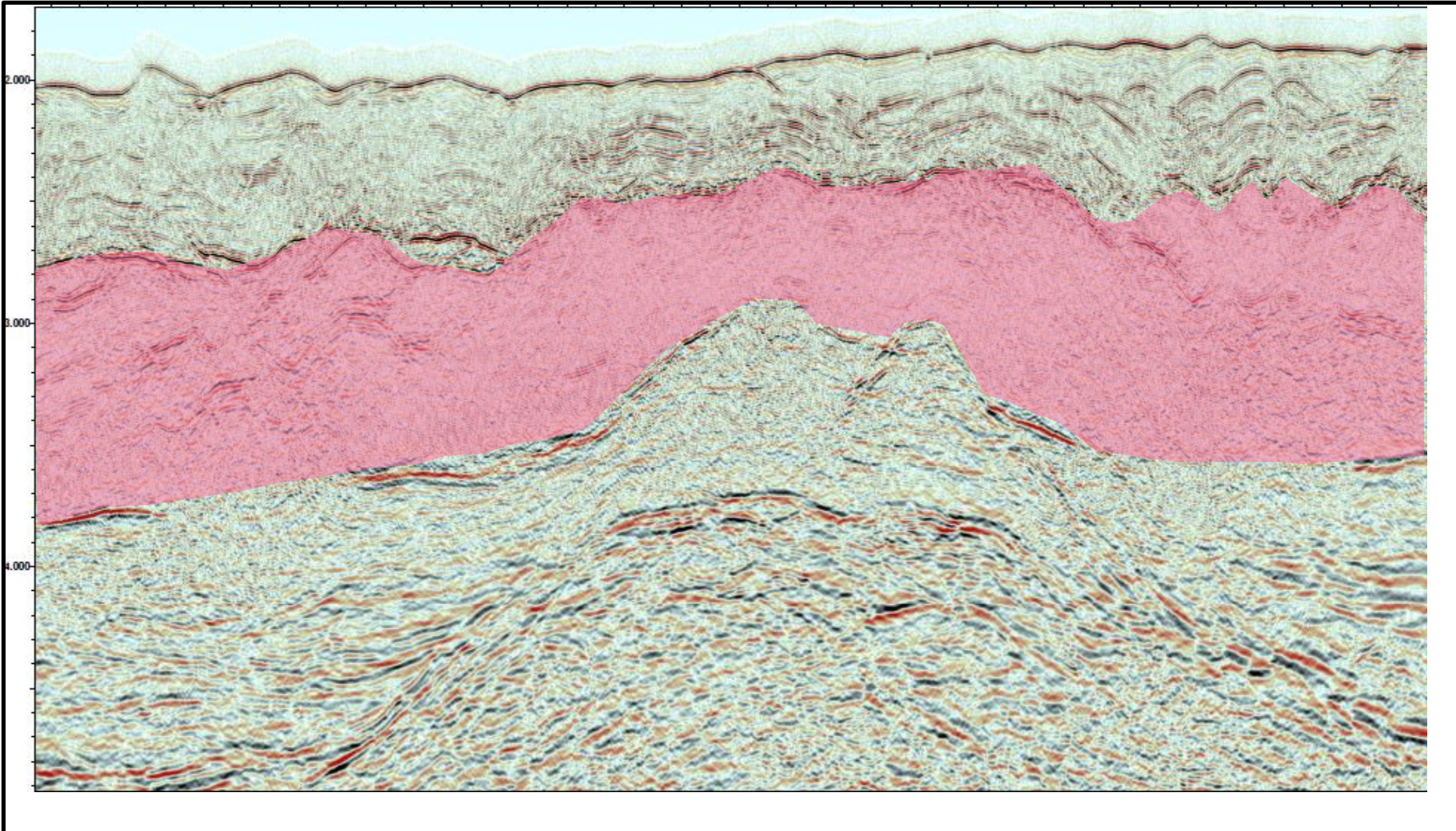
Zohr 1 : **624m** column
430m net pay

Zohr 2X : 455m column
305 m net pay

Zohr – Atoll Model



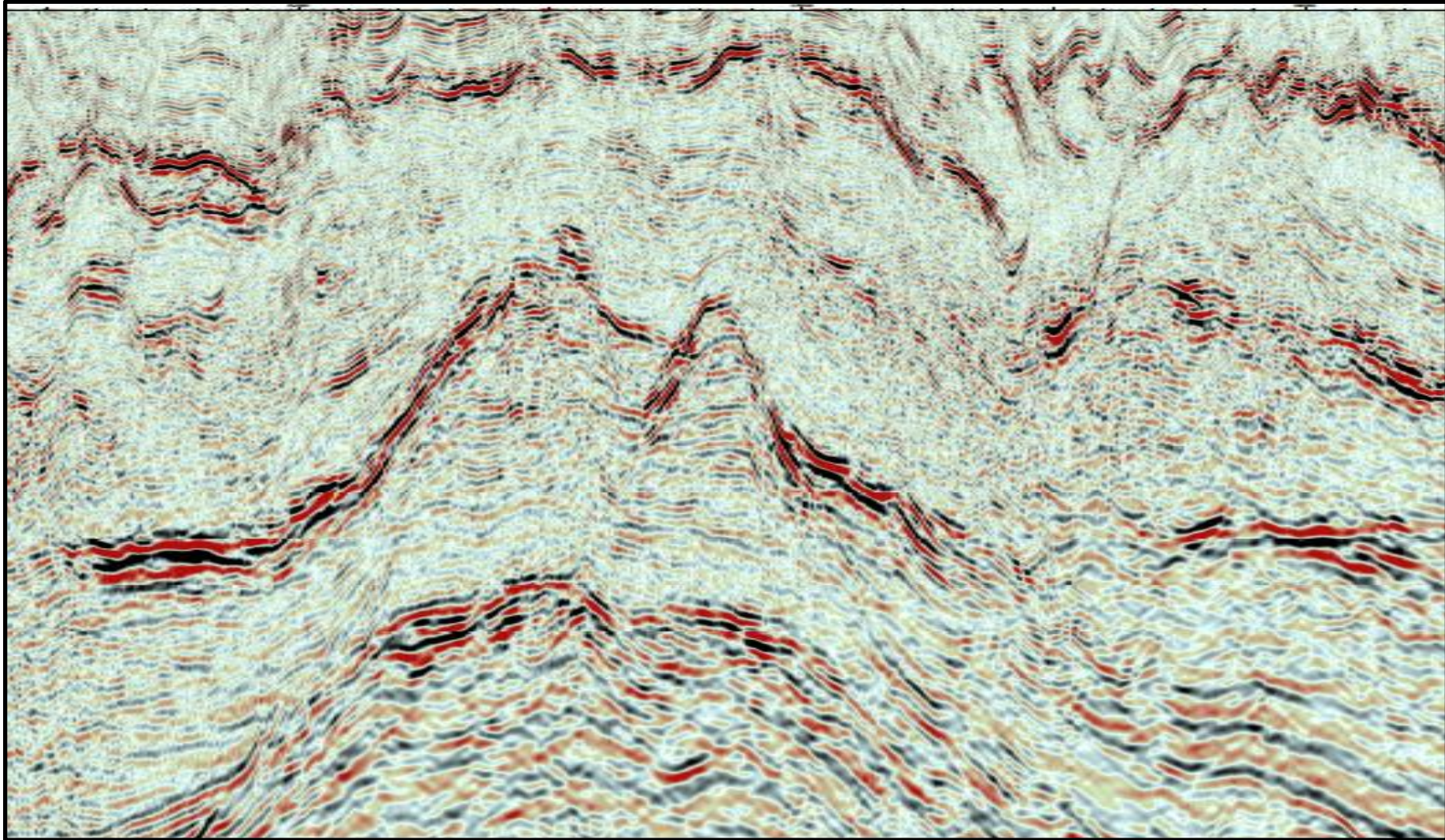
Initial view of Zohr 2000 processed data



3 seconds TWT of section

65 km line

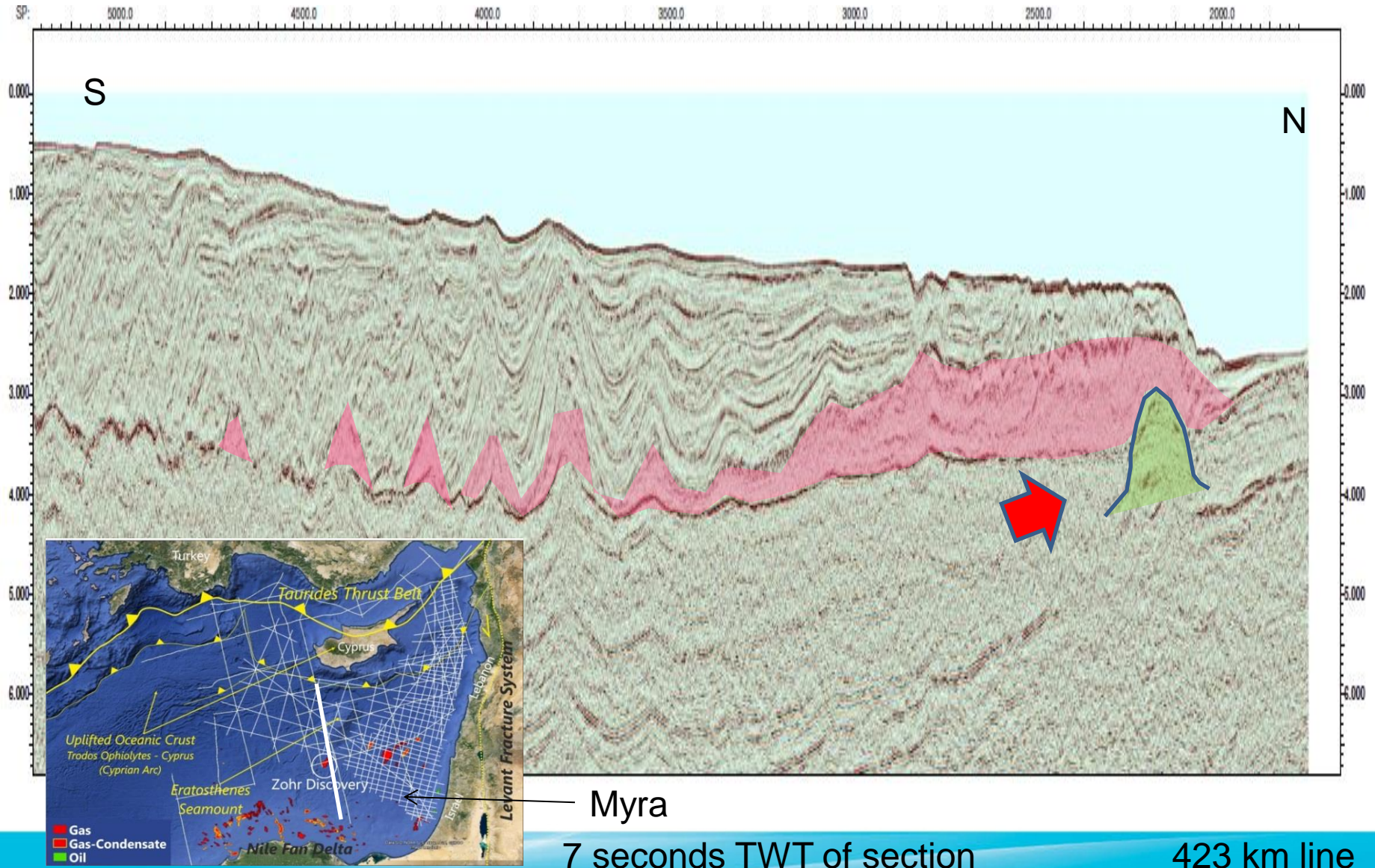
New Images of Zohr on 2016 BB processing



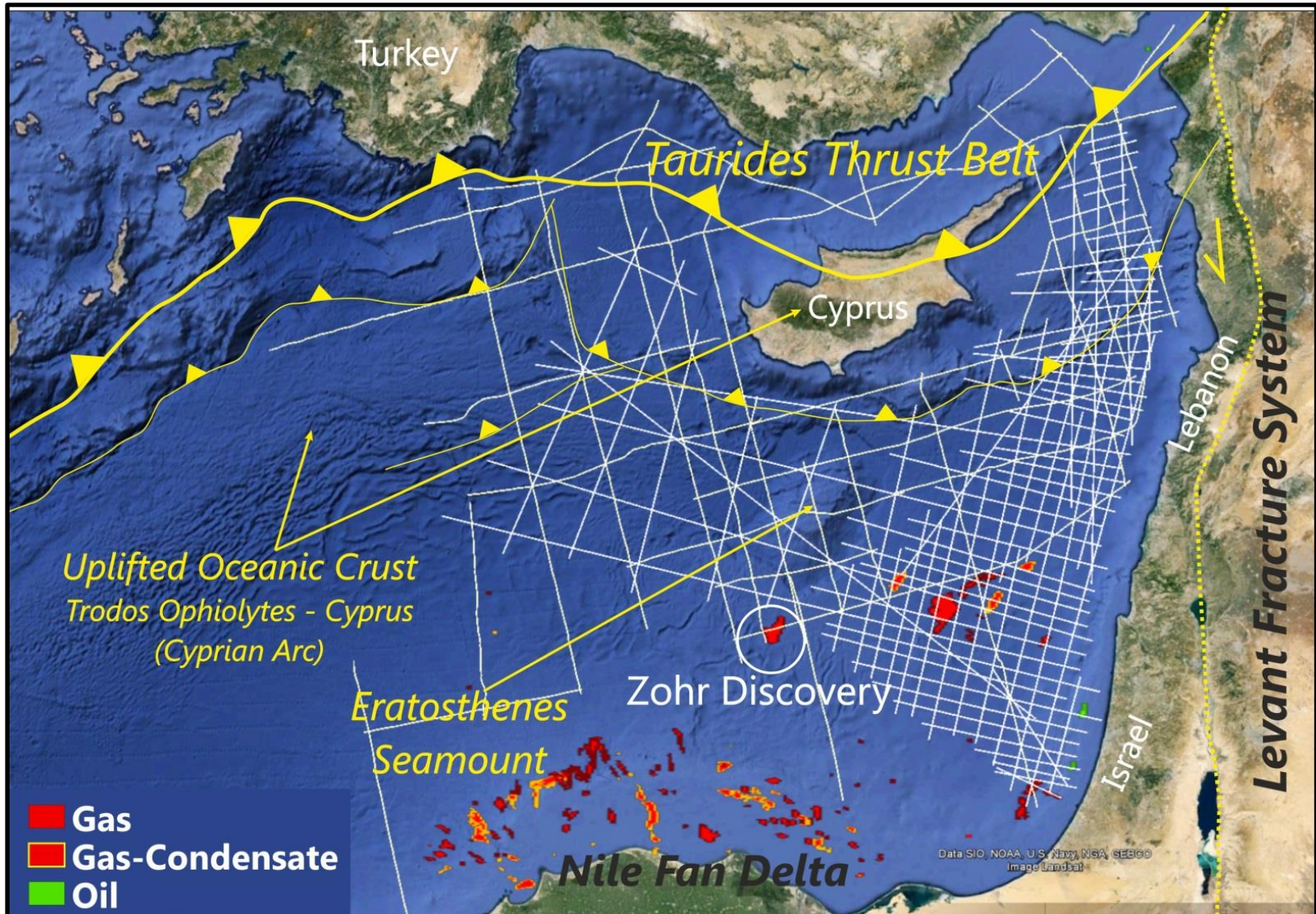
2 seconds TWT of section

64 km line

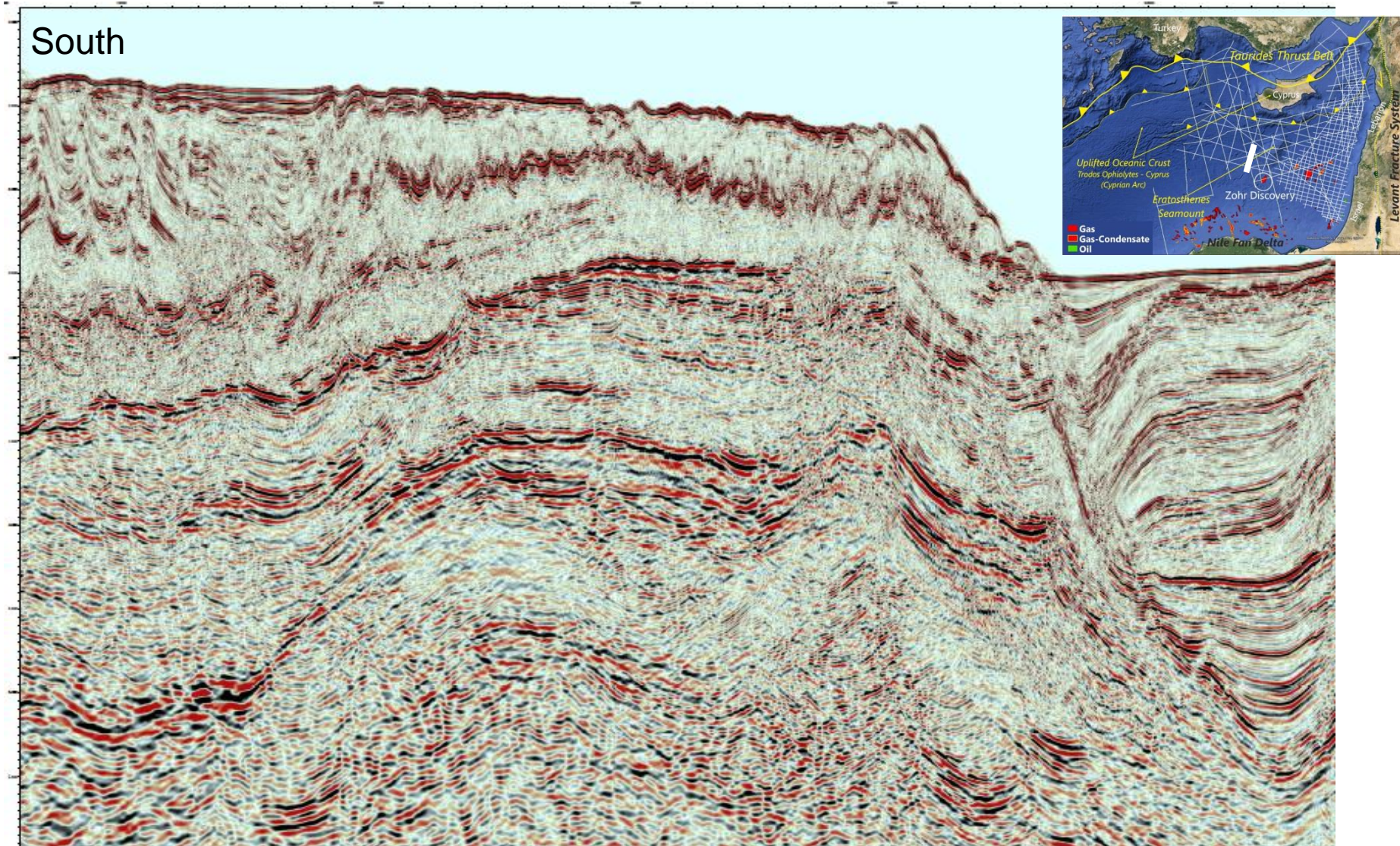
Regional S-N Line : Regional Play Elements



Regional Data Sets



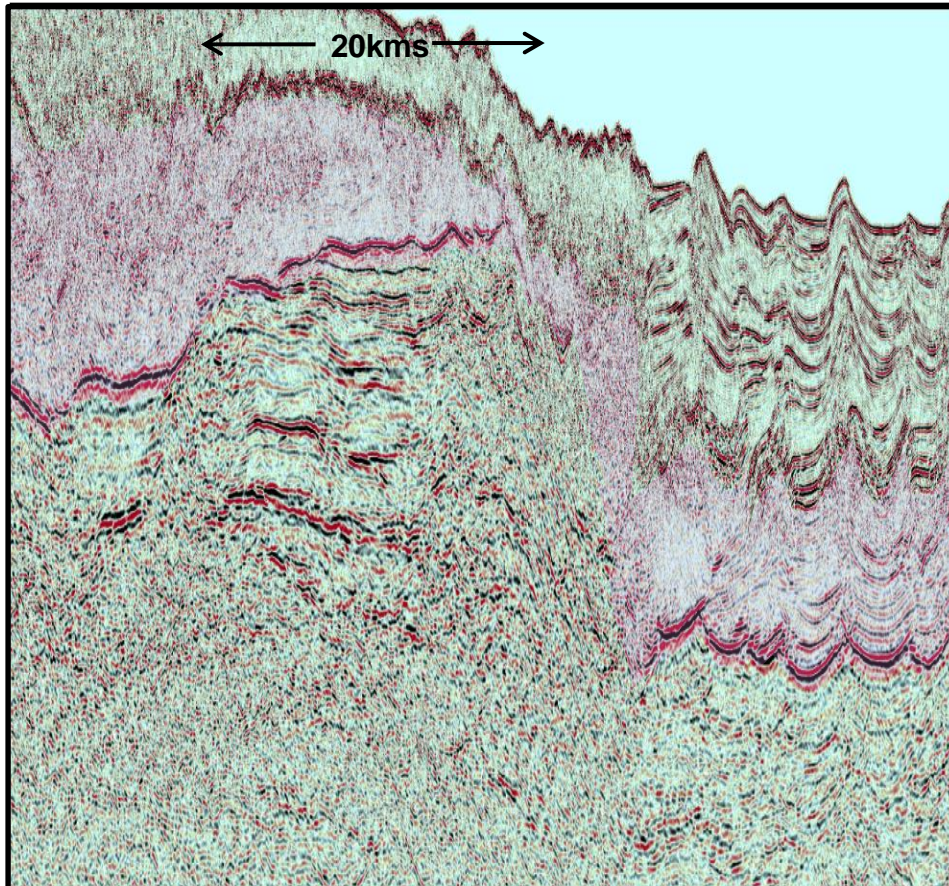
Analogue to Zohr on 2011 processing



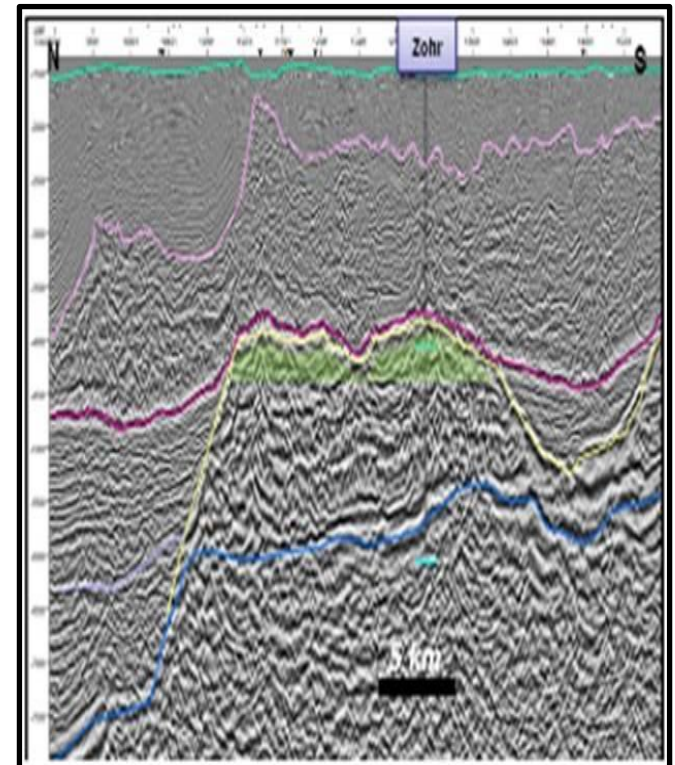
5 seconds TWT of section

95 km line

Analogue to Zohr to the north in Cyprus



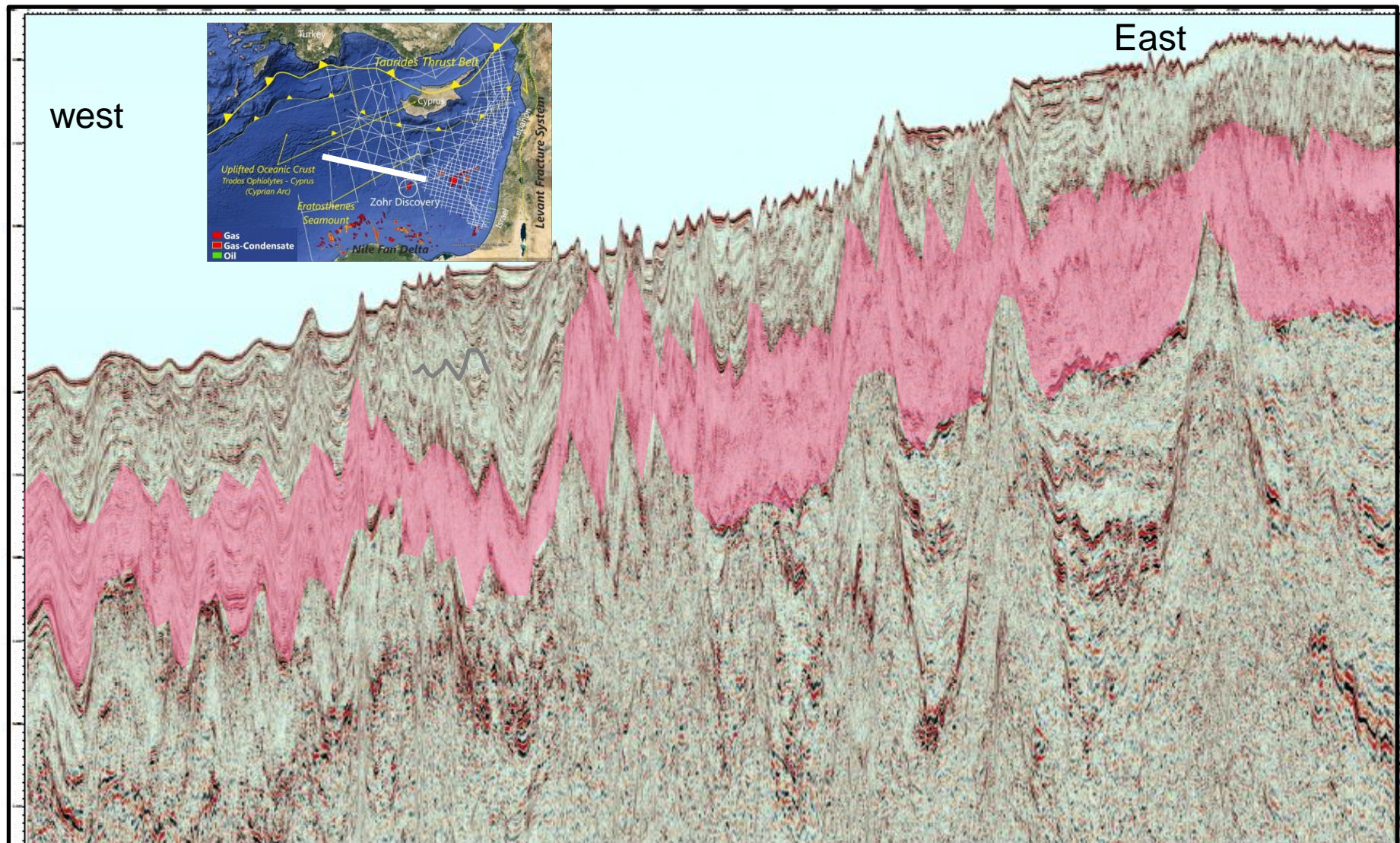
Zohr analogue
Cyprus Spectrum Data



Zohr

Source ENI

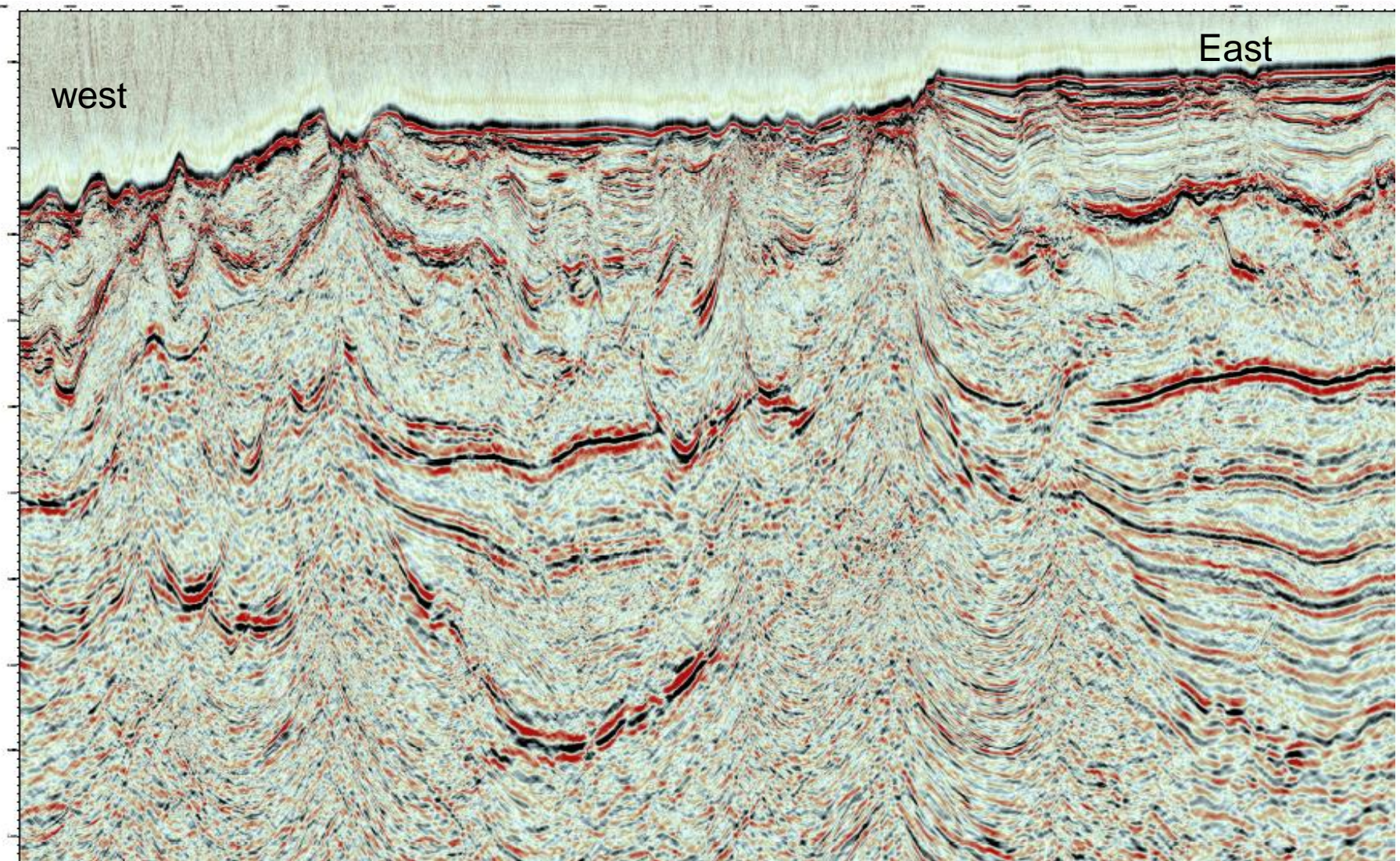
Zohr Analogues in Cyprus and Herodotus



4.5 seconds TWT of section

310 km long line

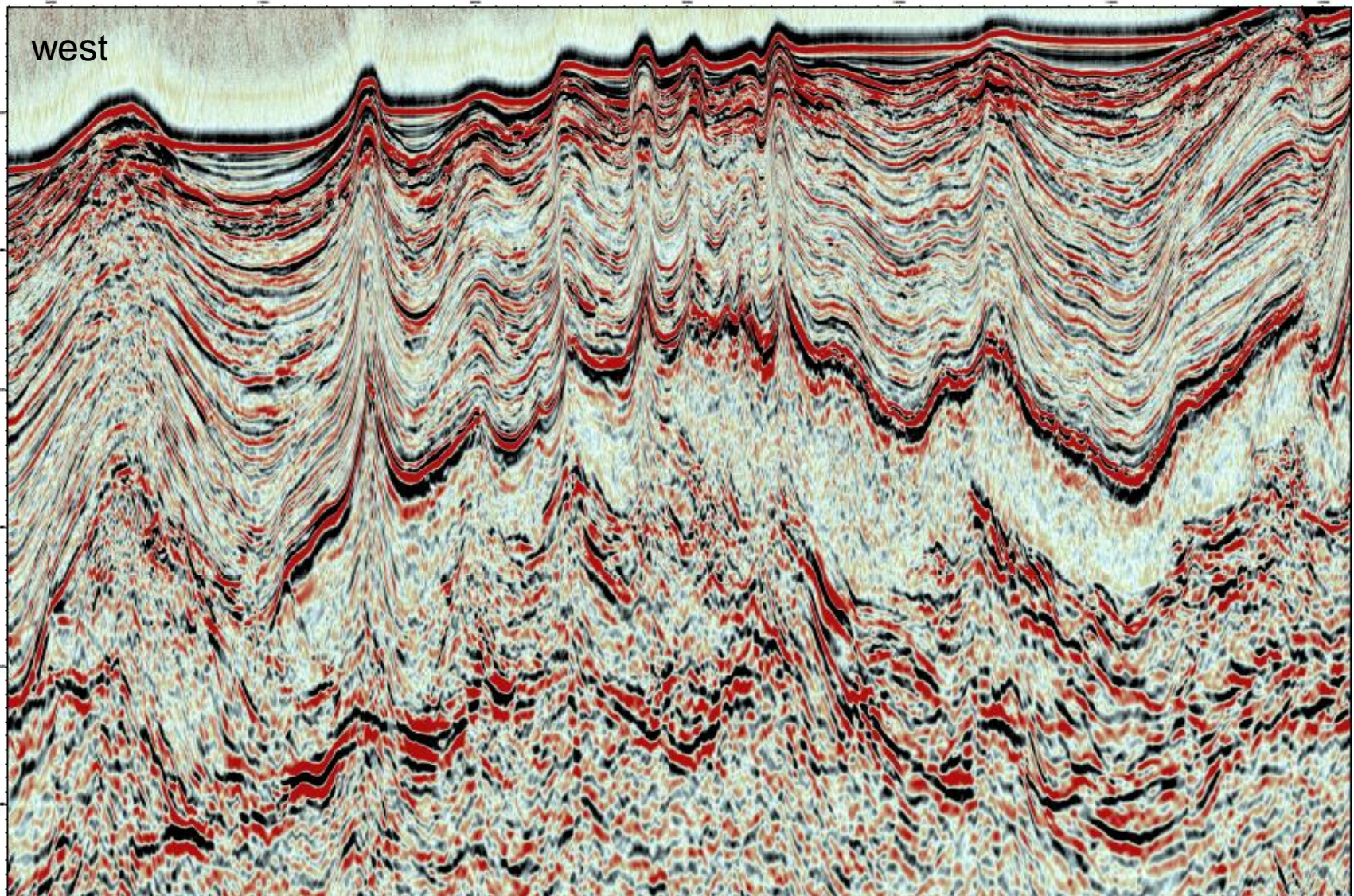
Analogues west of Zohr on 2016 BB prelim processing



4.5 seconds TWT of section

115 km line

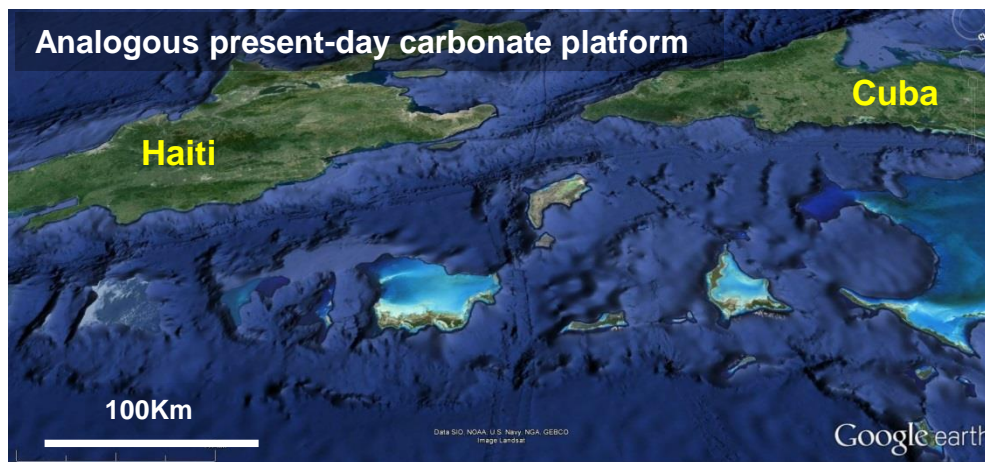
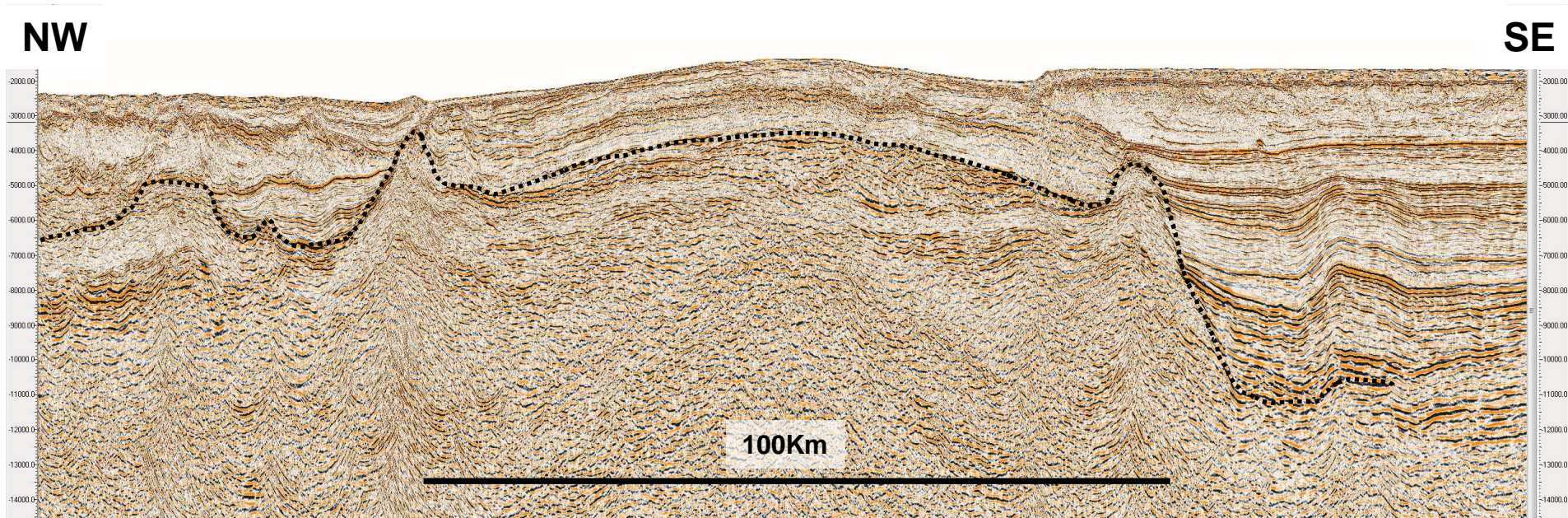
Detail of Herodotus build up on 2016 prelim BB repro.



3 seconds TWT of section

55 km line

Atolls growing on Eratosthenes Carbonate Platform

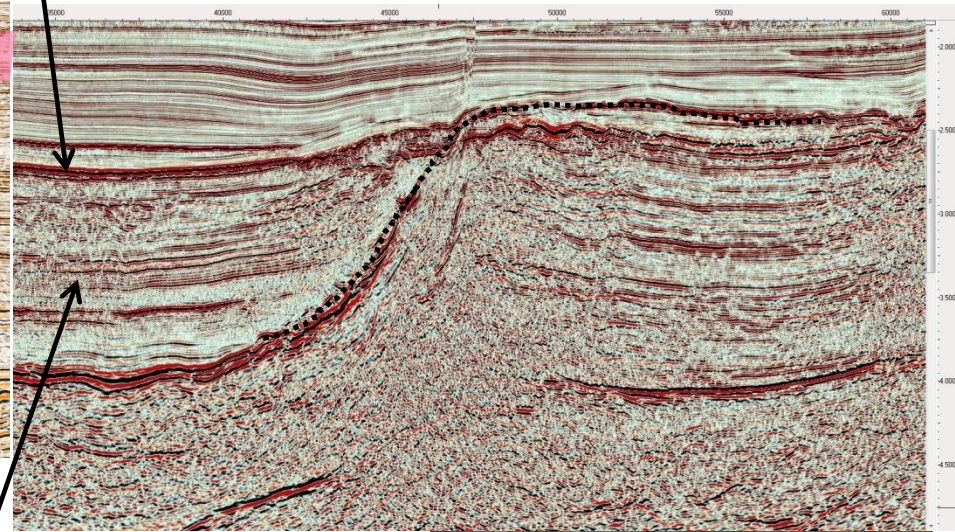
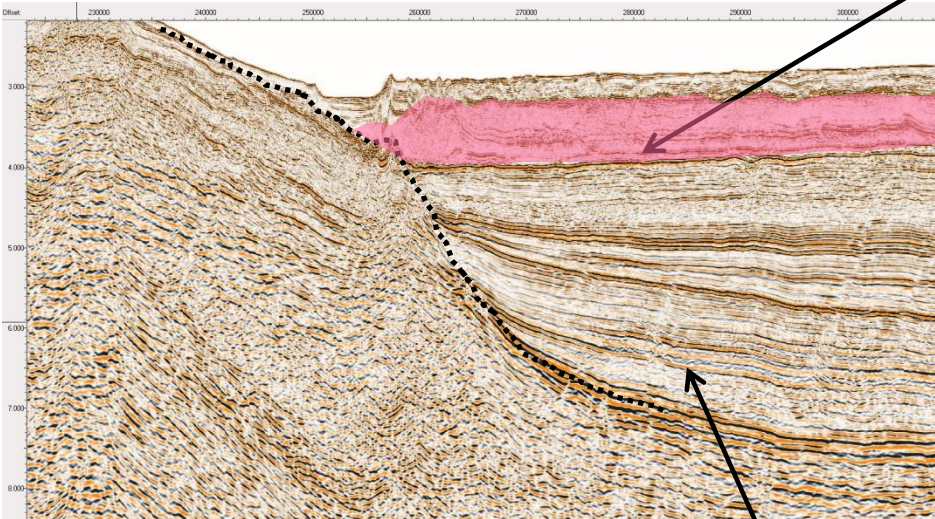


Carbonate Platform-Slope comparison

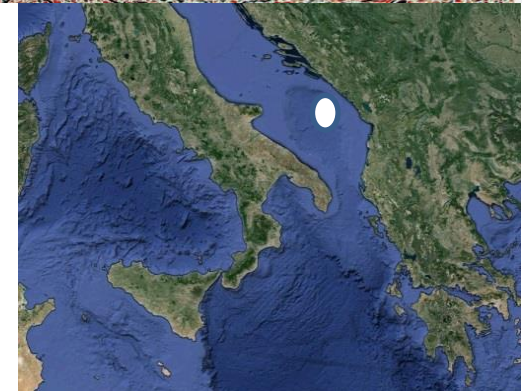
Eratosthenes Slope (U. Cretac. ?/Paleogene-Neogene)

Base Messinian

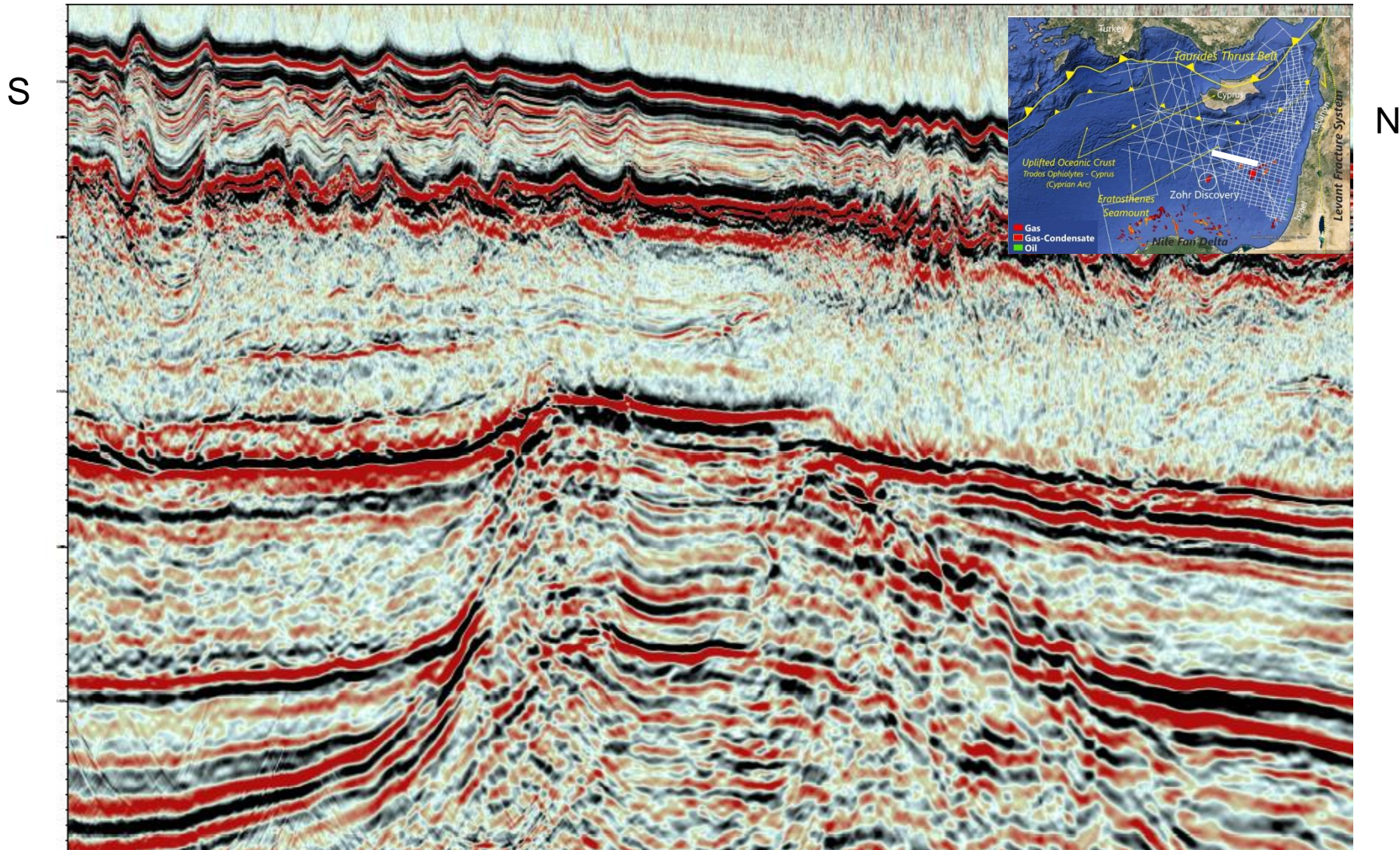
Croatian Slope (Paleogene-Neogene)



**Pelagic carbonate and siliciclastic
Paleogene-Neogene**



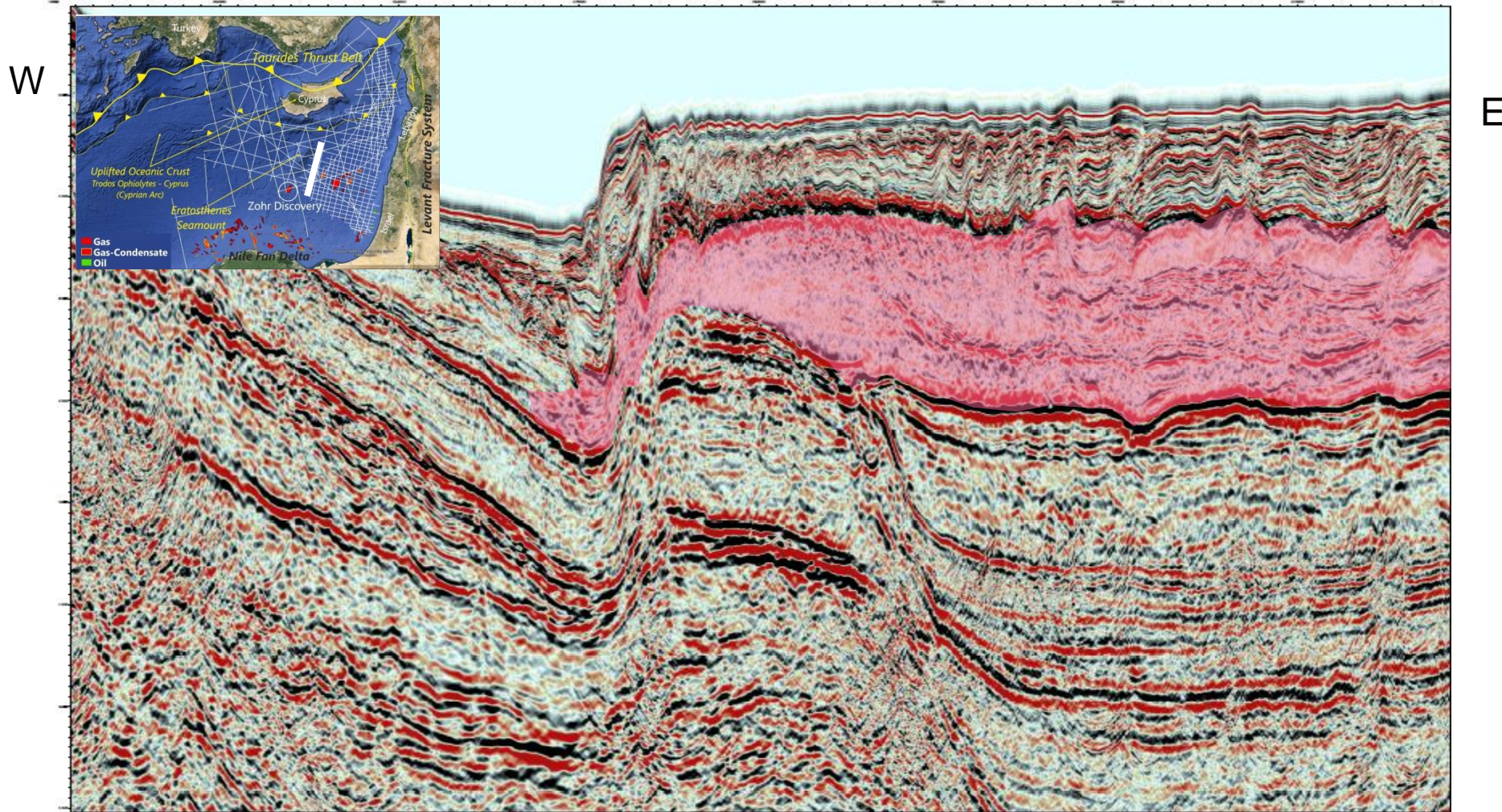
Eratosthenes Carbonate Platform Edge Play



2.5 seconds TWT of section

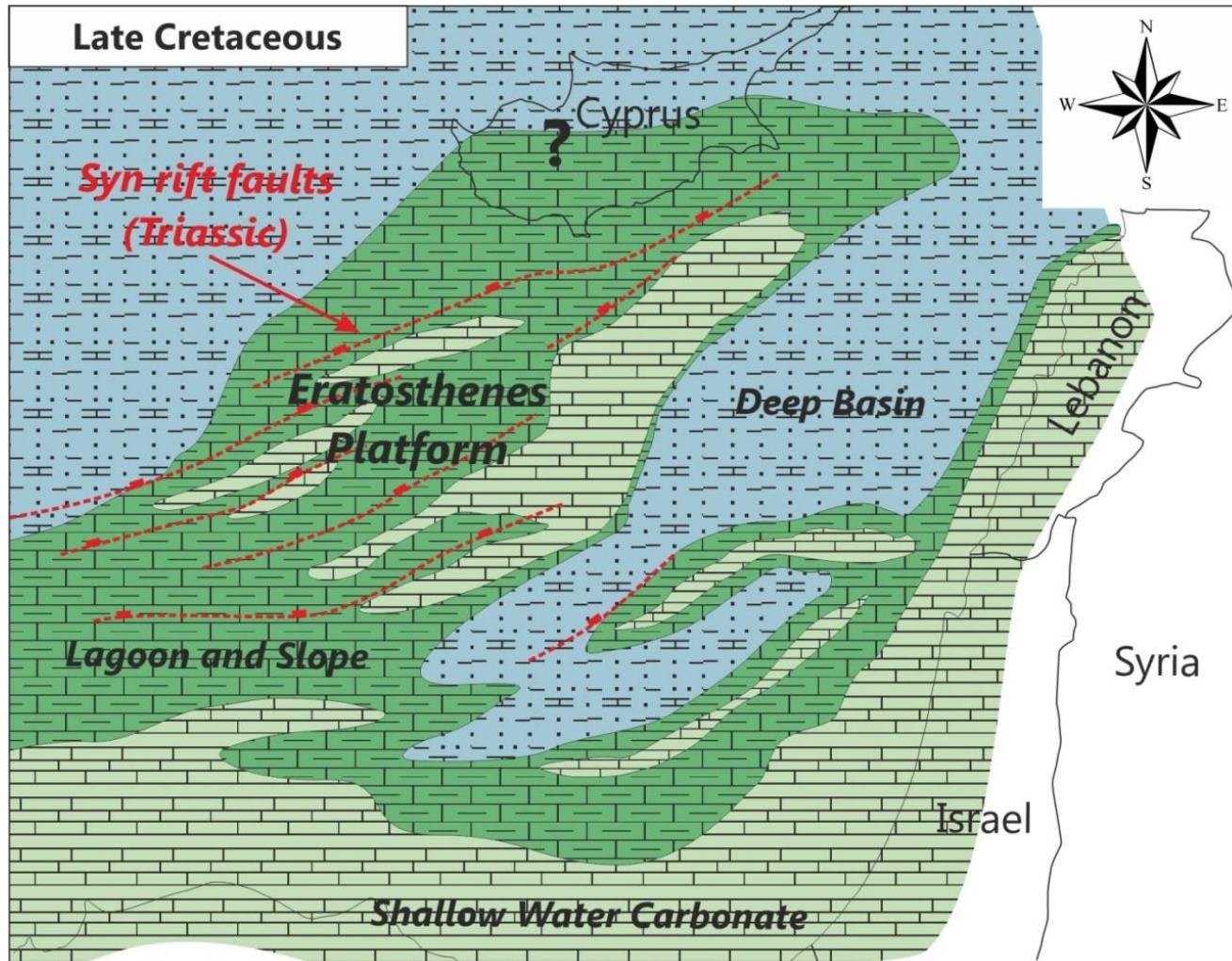
70 km line

Eratosthenes Carbonate Platform Edge Play

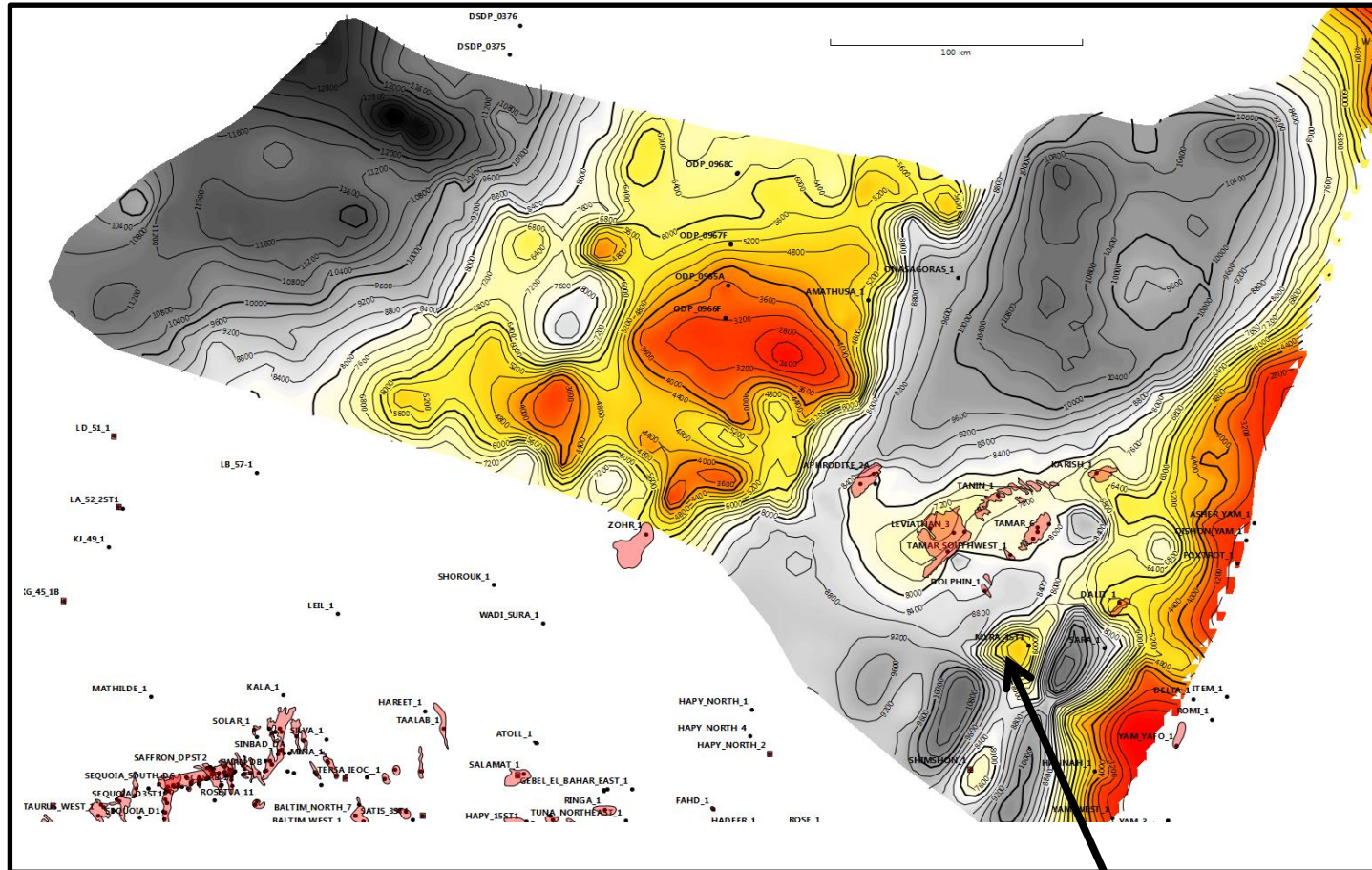


Messinian seal via eastward flow from North Levant Basin

Eratosthenes Carbonate Platform Controlling Cretaceous to Early Miocene Deposition



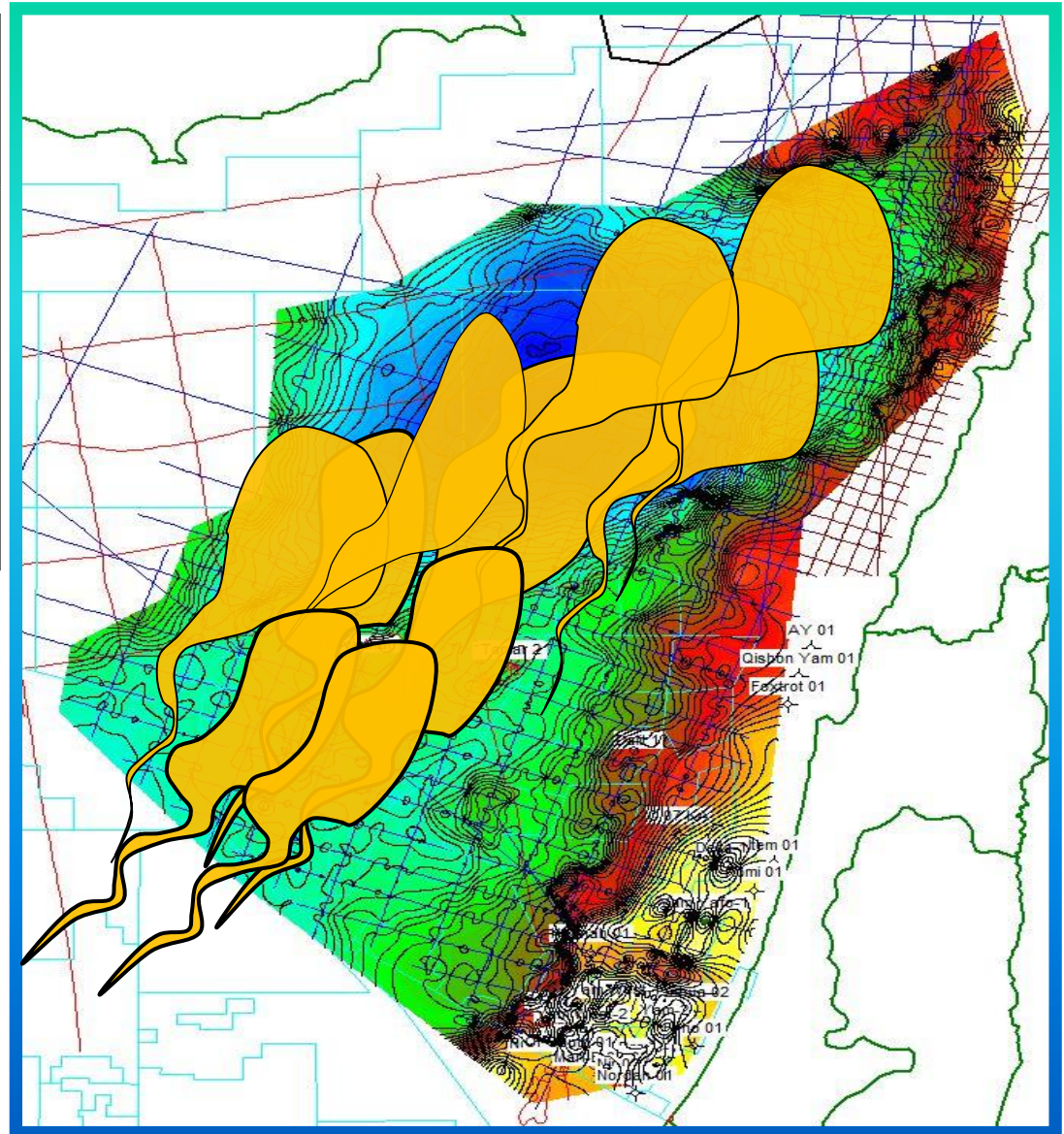
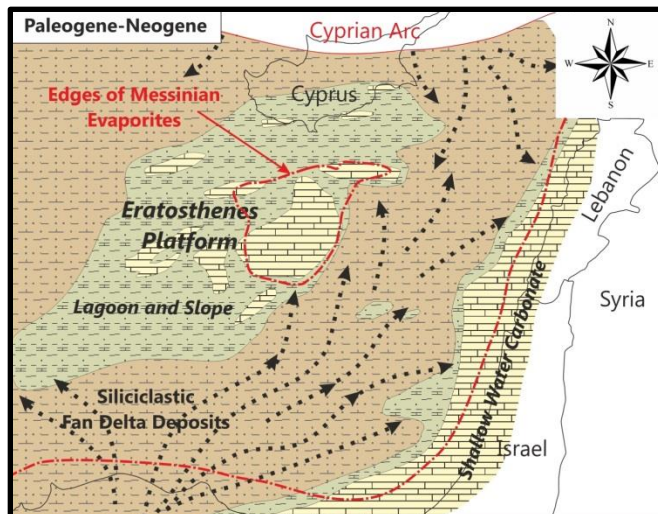
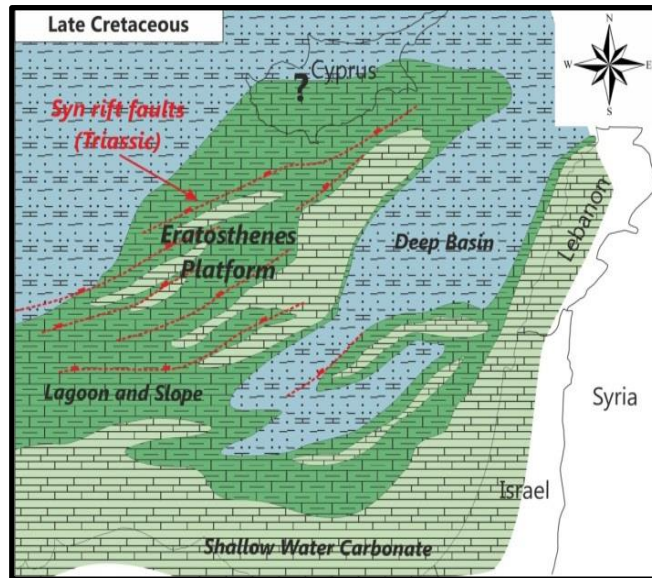
Atolls on the Eratosthenes Carbonate Platform



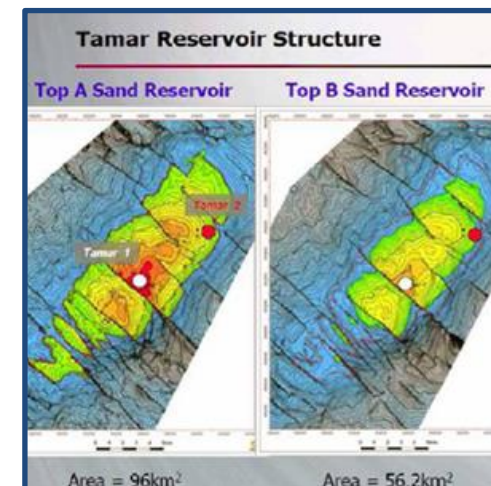
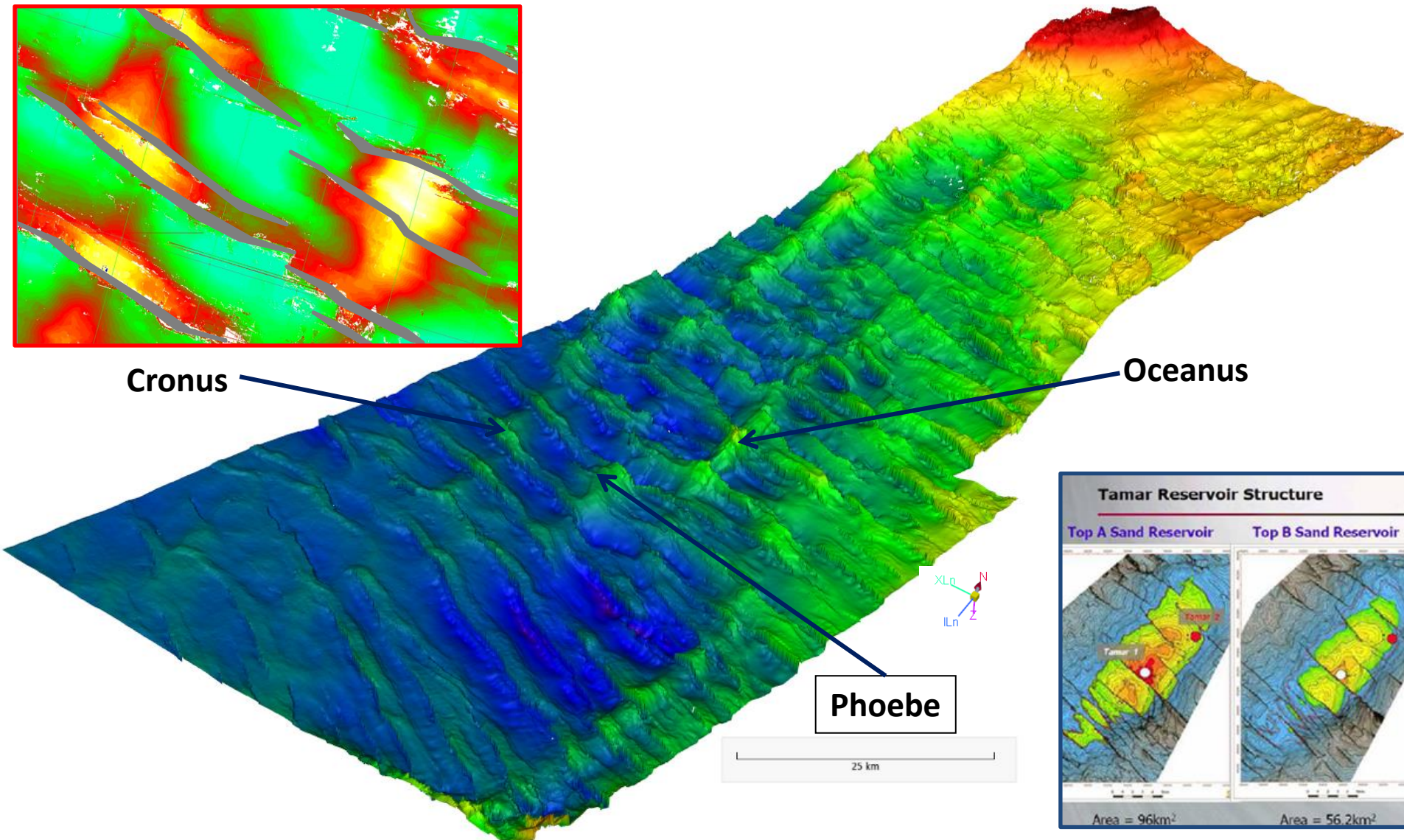
Depth Map of the seismic facies related to Carbonate Platforms (Mesozoic-Cenozoic)

Myra Carbonate Build Up Southern Levant

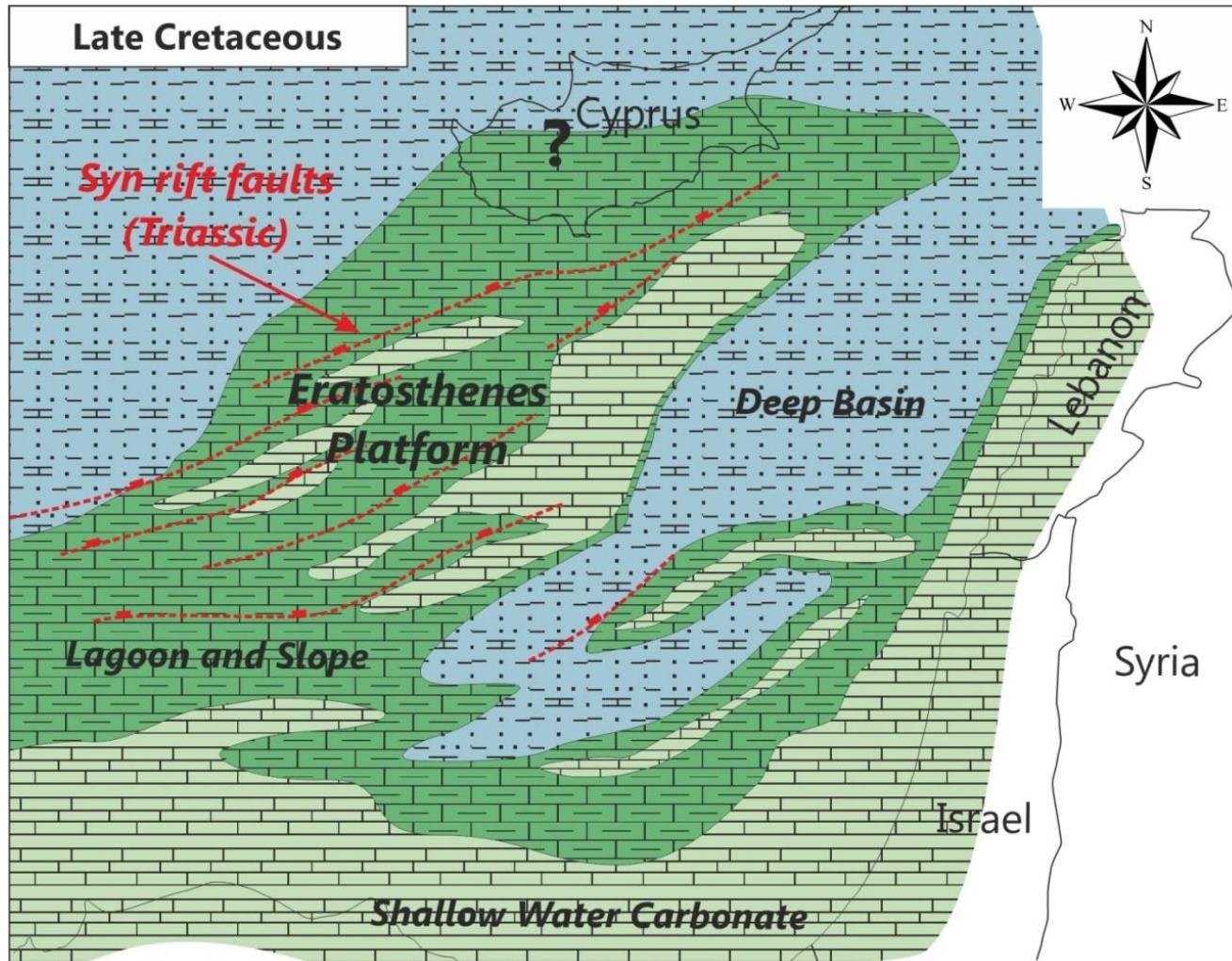
Sand Provenance



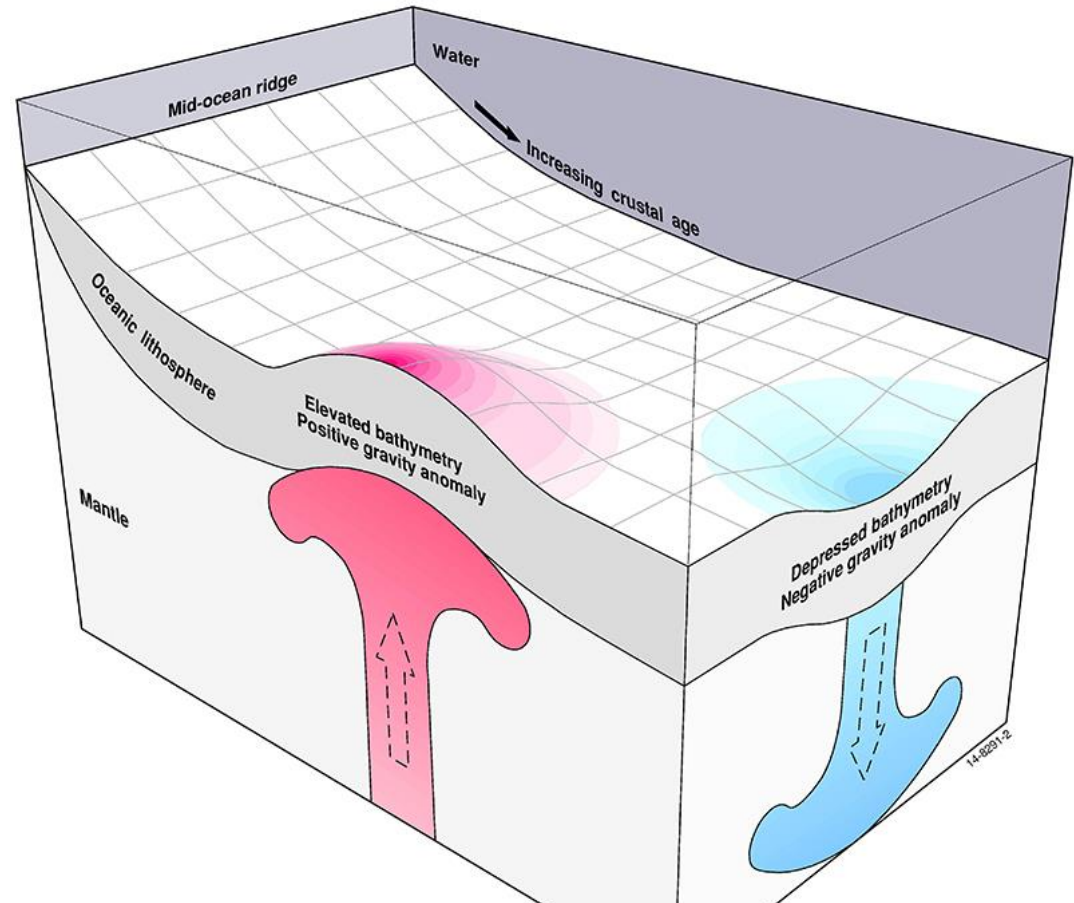
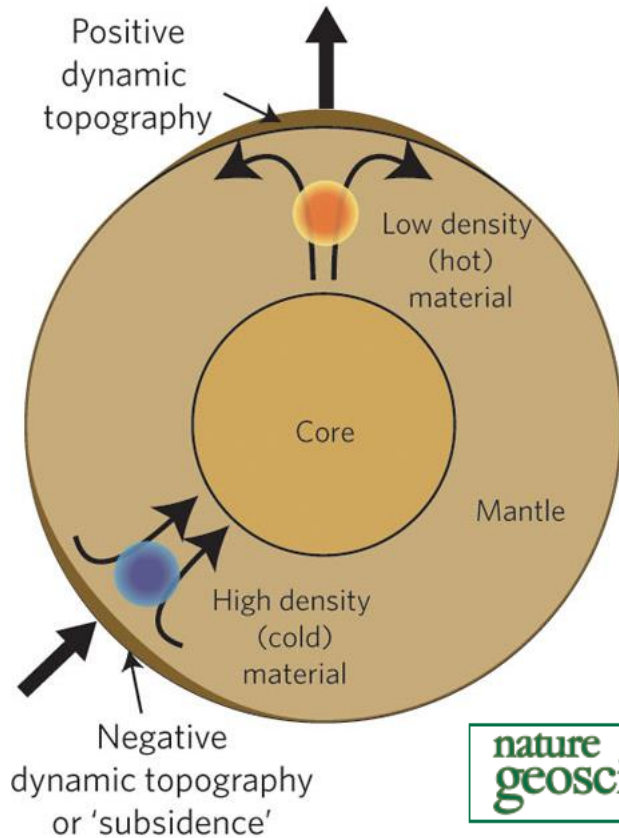
Structures North Levant Basin Mapped on 3D at Top Early Miocene



Why does the Eratosthenes Platform Founder at end Cretaceous?



An Overarching Basin subsidence/uplift Model



**nature
geoscience**

ARTICLES

PUBLISHED ONLINE: 9 MAY 2016 | DOI: 10.1038/NGE02709

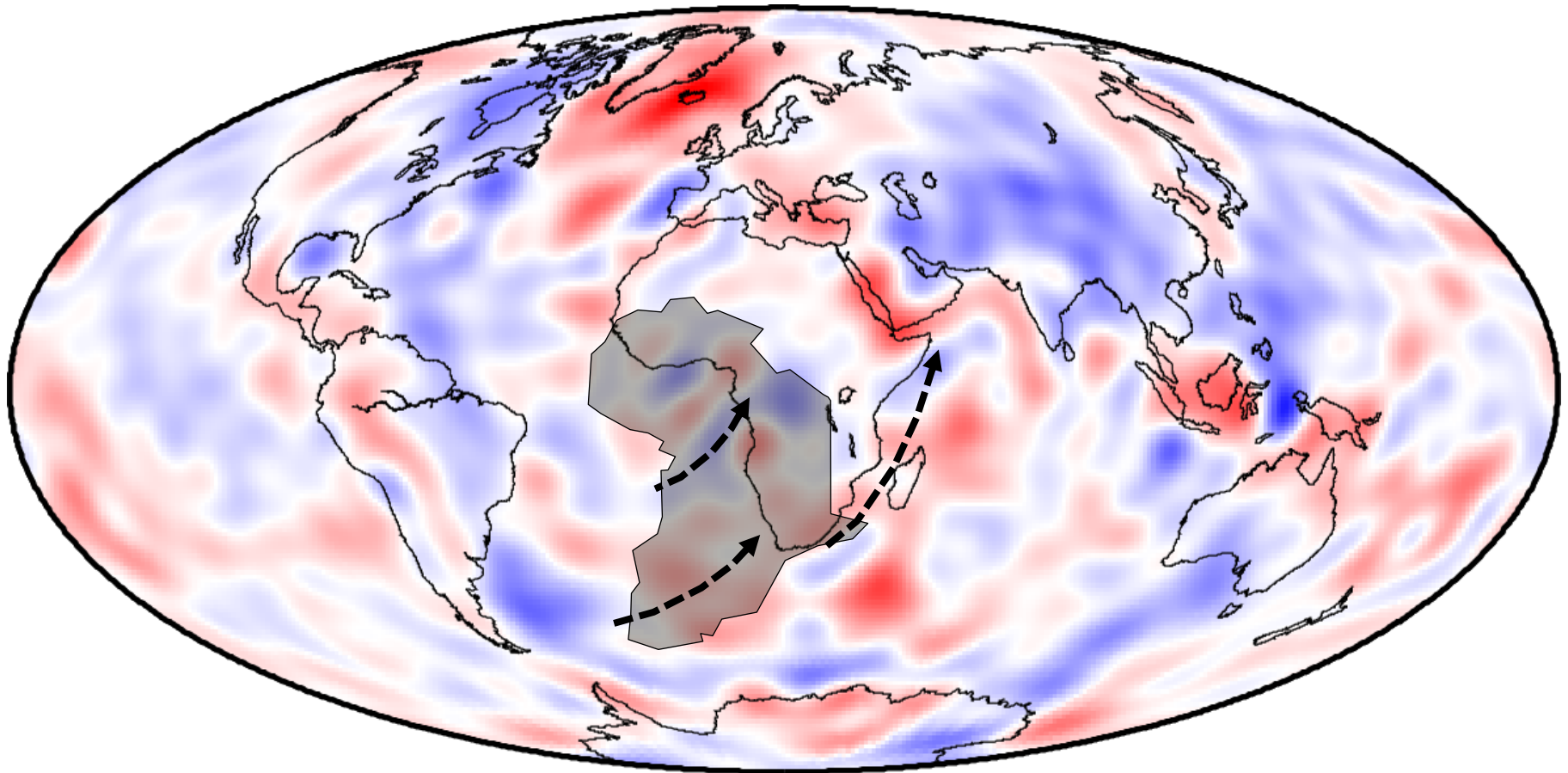
Global dynamic topography observations reveal limited influence of large-scale mantle flow

M. J. Hoggard*, N. White* and D. Al-Attar

Braun (2012)

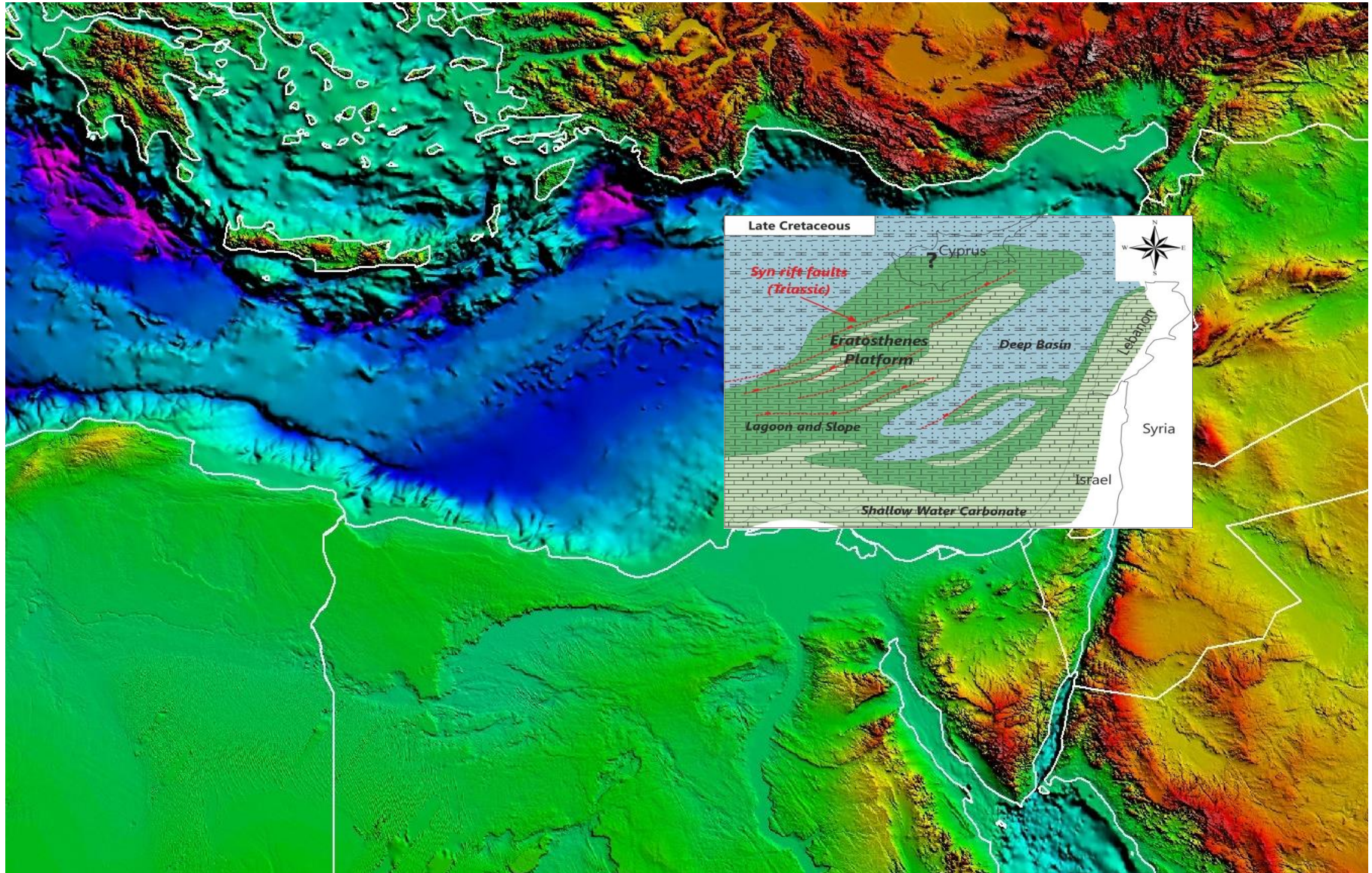
Courtsey
K. Czarnota
And
N. White

Basin Tracks from 120 Ma to Recent



Basin subsidence expression and constant convection cells

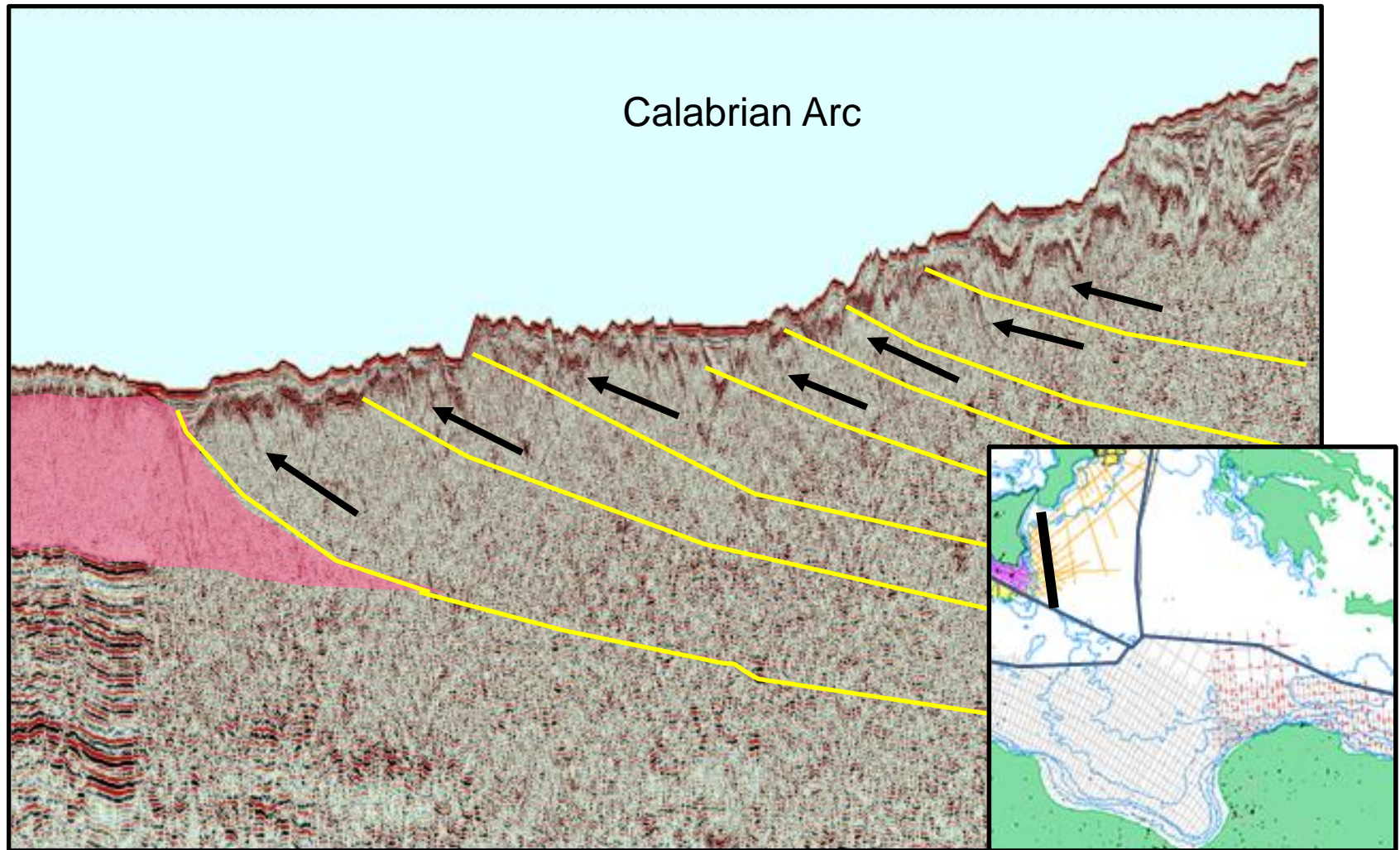
Eastern Mediterranean: Keeps on Giving



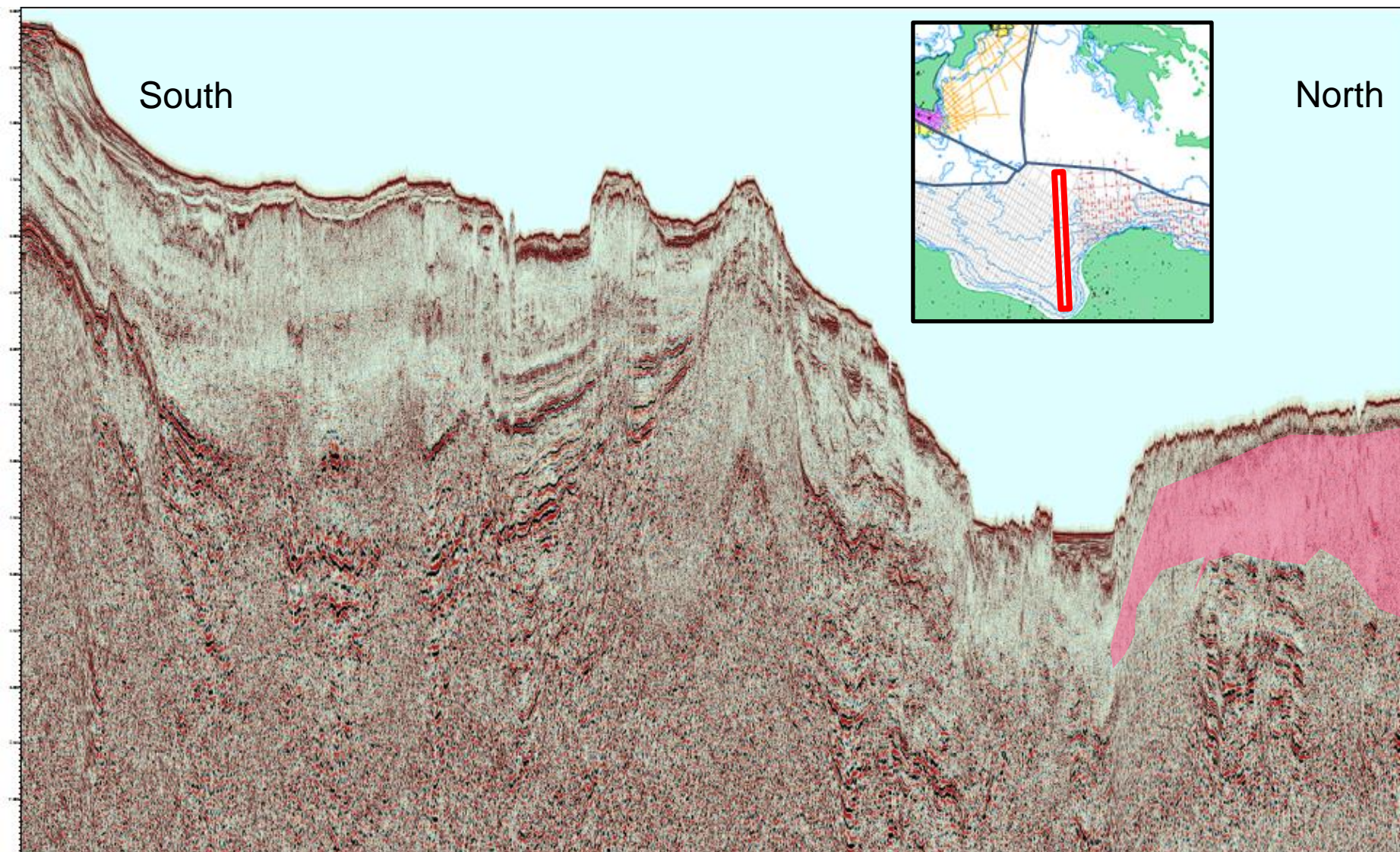
South-North Line east of Sicily

South

North



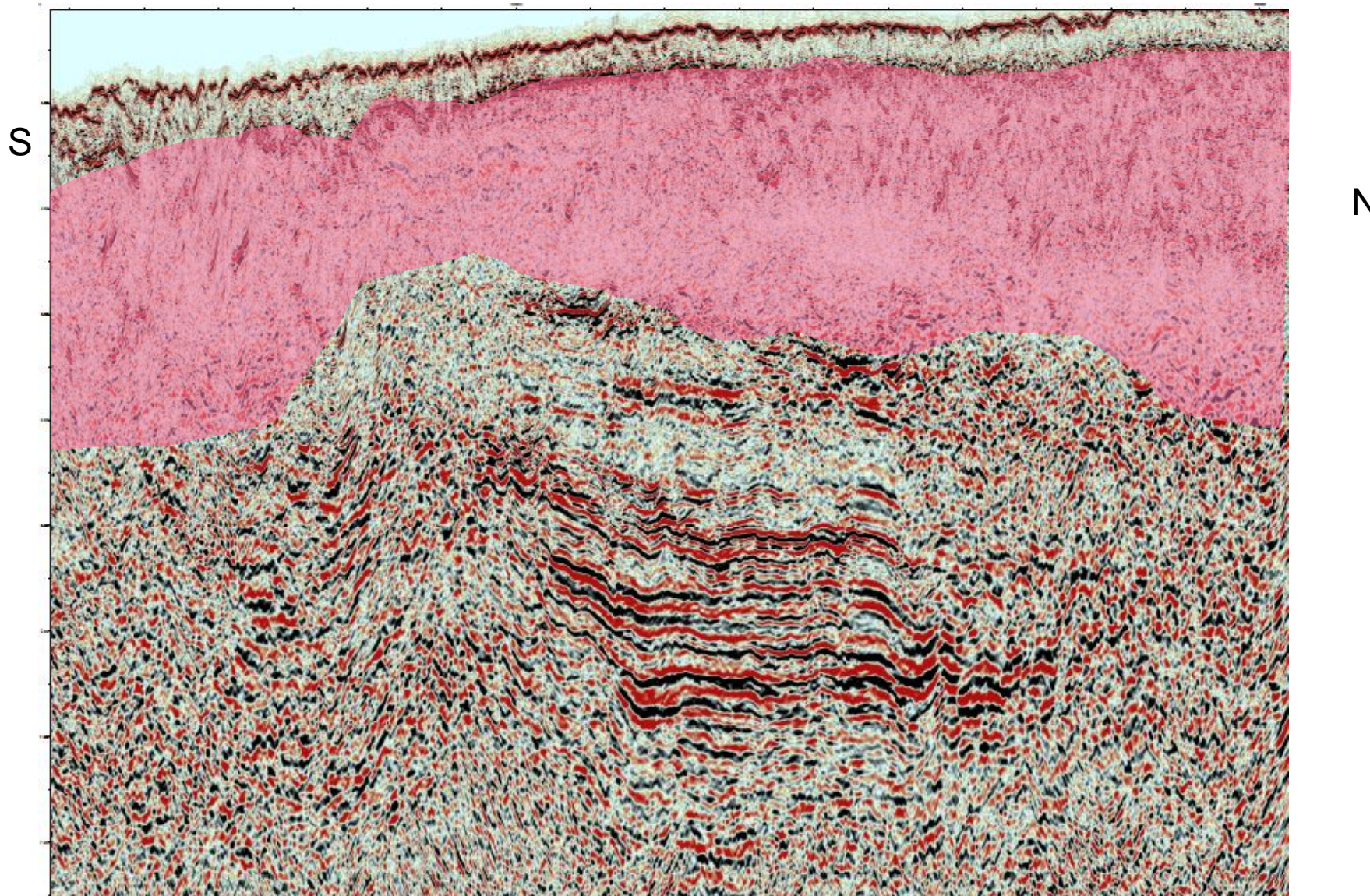
S-N line from Sirte to Libyan border



7.5 secTWT

450km long line

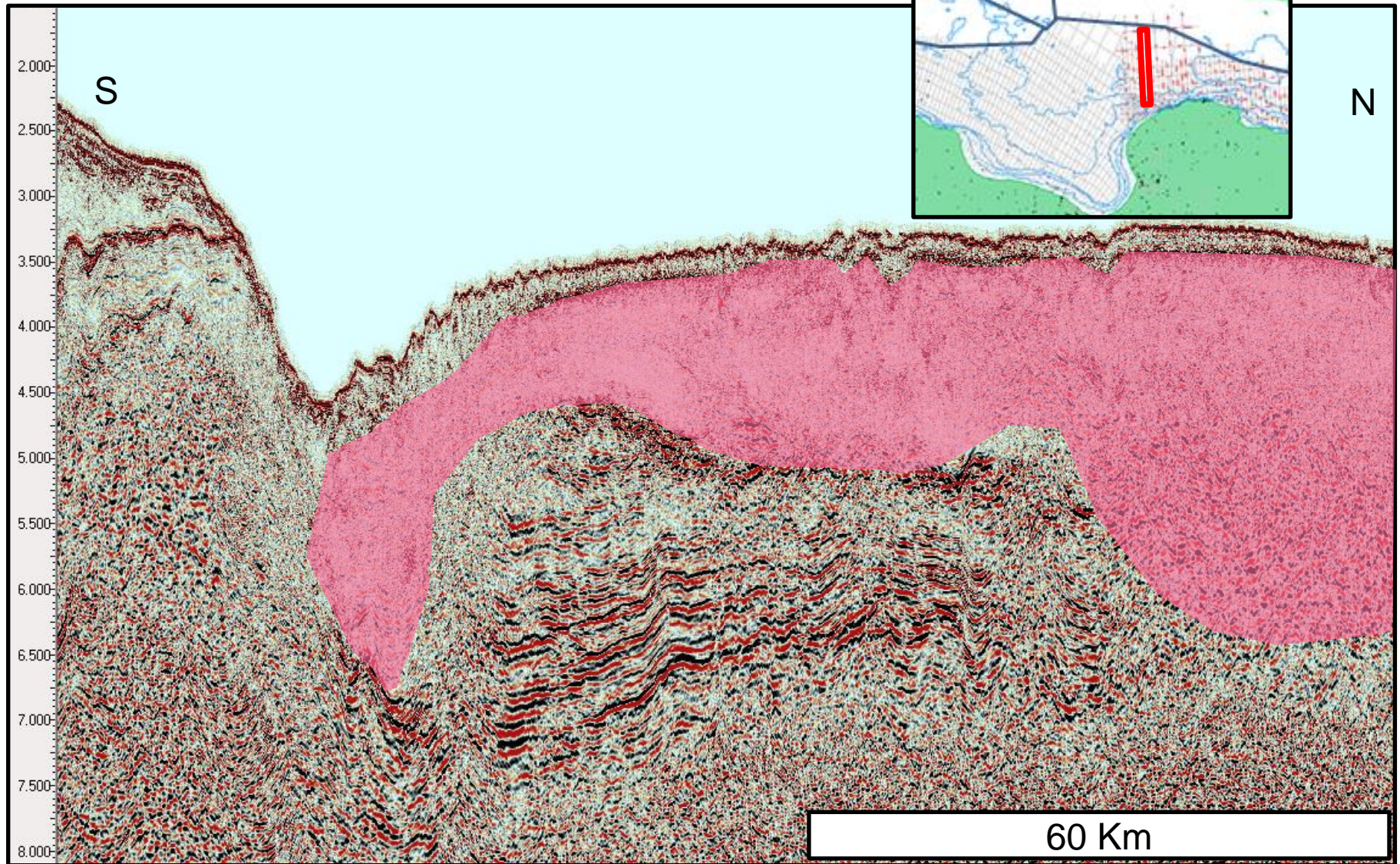
2D line S-N North of Cyranacia



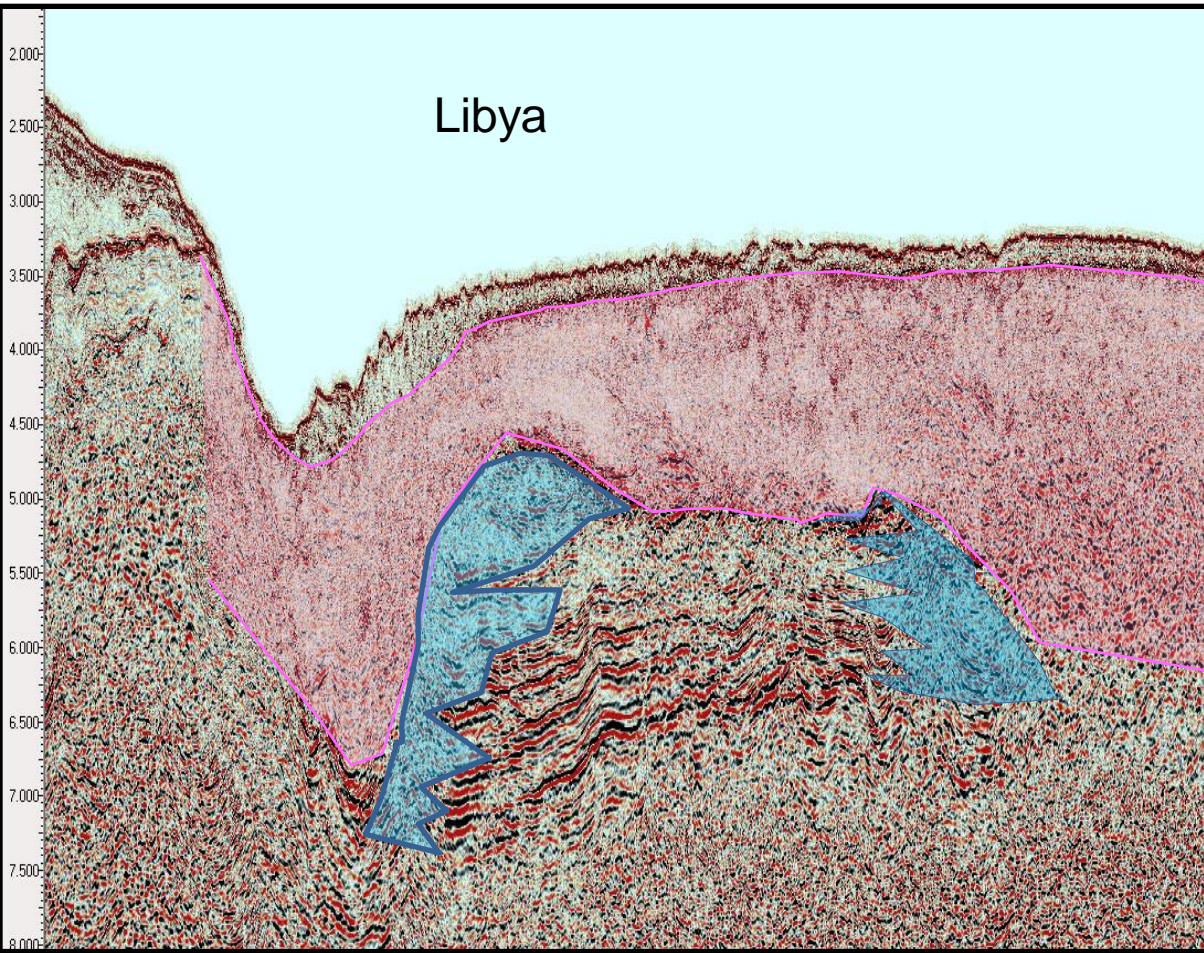
3.5 sec of section shown

165 km

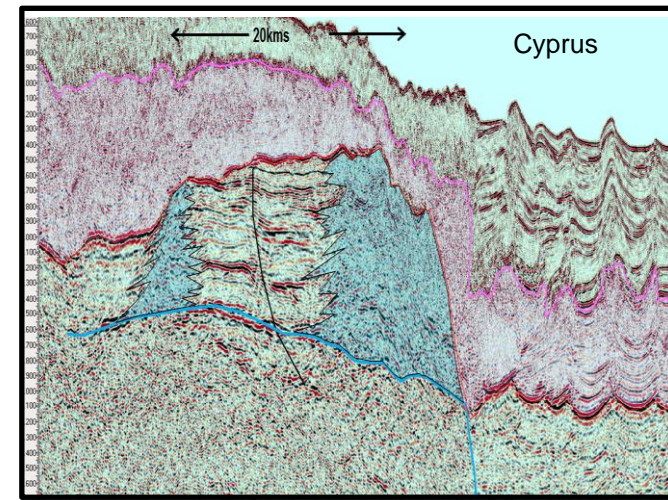
2D line S-N North of Cyranacia



Comparison on same scales Libyan and Cyprus Build ups.



Top Seal: Messinian
 Source: ?Tethian Jurassic oil
 Or Oligo/Miocene dry gas
 Reservoir: Atoll Carb. Build up



Eastern Mediterranean: Keeps on Giving

